

# VIDÉO DES GRANDES CONTRIBUTIONS

# Polytechnique Montréal

## 150 Years of History and All the More Reasons to Innovate

MAUD COHEN, President



# Look to the future

*staying ahead of the game*

# 150 YEARS TO BECOME A WORLD-CLASS ENGINEERING RESEARCH AND INNOVATION CENTER

- Over 10,000 students each year
- 1/3 of international students
- Agreements with 200+ institutions across the globe
- 57,000+ graduates worldwide



An international recognition of  
the quality of our training and cutting-edge research

# AT THE FOREFRONT OF INNOVATIVE SOLUTIONS FOR TOMORROW

8 centres of excellence in research and  
innovation

Almost 60 research chairs

\$100 million annual research budget



Energy, water et ressources



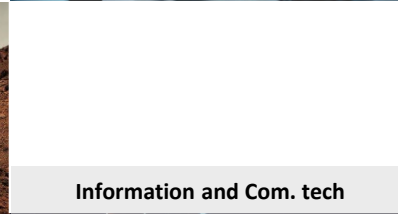
Human Health



Modellisation - AI



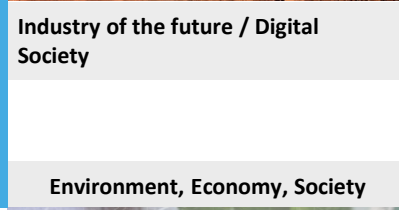
Industry of the future / Digital  
Society



Information and Com. tech



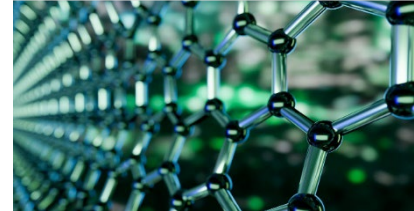
Sustainable Transport  
and Infrastructures



Environment, Economy, Society



Innovative Materials





## « CAMPUS POLY 150 »

Meet the needs of education  
and research in engineering



**ENRICHING THE EDUCATION  
EXPERIENCE  
AND SUPPORTING  
ENTREPRENEURSHIP**

**70 %**

of our students  
plan to start  
their own business

**27** active spinoff  
companies



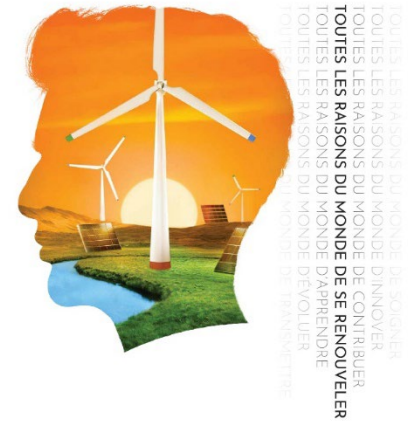
# Maximize our impact

*shaping the next generation of engineers*



## ADAPTING ENGINEERING PRACTICE FOR A SUSTAINABLE WORLD

- Discuss the required scientific knowledge base
- Take into account the impact of AI advent
- Define the roles and skills of the next generation of engineers
- Help them to think about the integration of the end user from the design of the solution
- Find ways to prepare our students to collaborate in multidisciplinary and intercultural teams



May 2023, 15 : an event to drawn up a portrait of the engineer of tomorrow

# Accelerate innovation

*strengthening collaborations*

## RESEARCH TEAMS ALREADY WORKING WITH MAJOR INDUSTRIAL PARTNERS

- 280 research projects
- 6 innovation-zone projects



**MOBILIZE  
MULTIDISCIPLINARY TEAMS  
AND FIND SOLUTIONS  
WITH ALL STAKEHOLDERS AND USERS**



*Artificial  
intelligence (AI)*



*Life cycle and  
Sustainability  
metrics*



*Medical  
technologies*



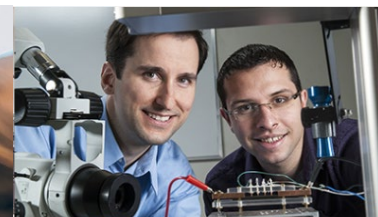


**TREMENDOUS POTENTIAL  
FOR COLLABORATION  
ON SOLUTIONS**

academic  
exchanges



research  
partnerships



Horizon Europe





## EXPAND STUDENT MOBILITY

- 800 international students each year  
10% from CLUSTER network
- Nearly 200 Polytechnique students  
to study abroad as part of their curriculum



our expanded collaboration  
must begin with the training of our students.

ALL THE MORE REASON TO BUILD  
ALL THE MORE REASON TO SUPPORT  
ALL THE MORE REASON TO DREAM  
**ALL THE MORE REASON TO CELEBRATE**  
ALL THE MORE REASON TO INNOVATE  
ALL THE MORE REASON TO CONTRIBUTE  
ALL THE MORE REASON TO LEARN