

The role of university in implementing sustainable development challenges of cities and communities

Patrizia Lombardi

Politecnico di Torino



**Politecnico
di Torino**

Who is talking?

BACKGROUND

BA/MA in *Architecture* in IT

M.Sc in *Urban Planning and Real Estate Market* in IT

PhD in *Business & Informatics* in UK in 1999

CURRENT OCCUPATION

Full Professor in Urban planning evaluation & Decision making at Politecnico di Torino

Vice Rector for *Sustainable campus & communities* and *Green team coordinator* at Politecnico di Torino


President of the Italian Network of Universities for Sustainable Development (RUS)

Member of the *Technical Mission Structure* of the Sustainable Mobility & Infrastructure Ministry (MIMS)



**Politecnico
di Torino**





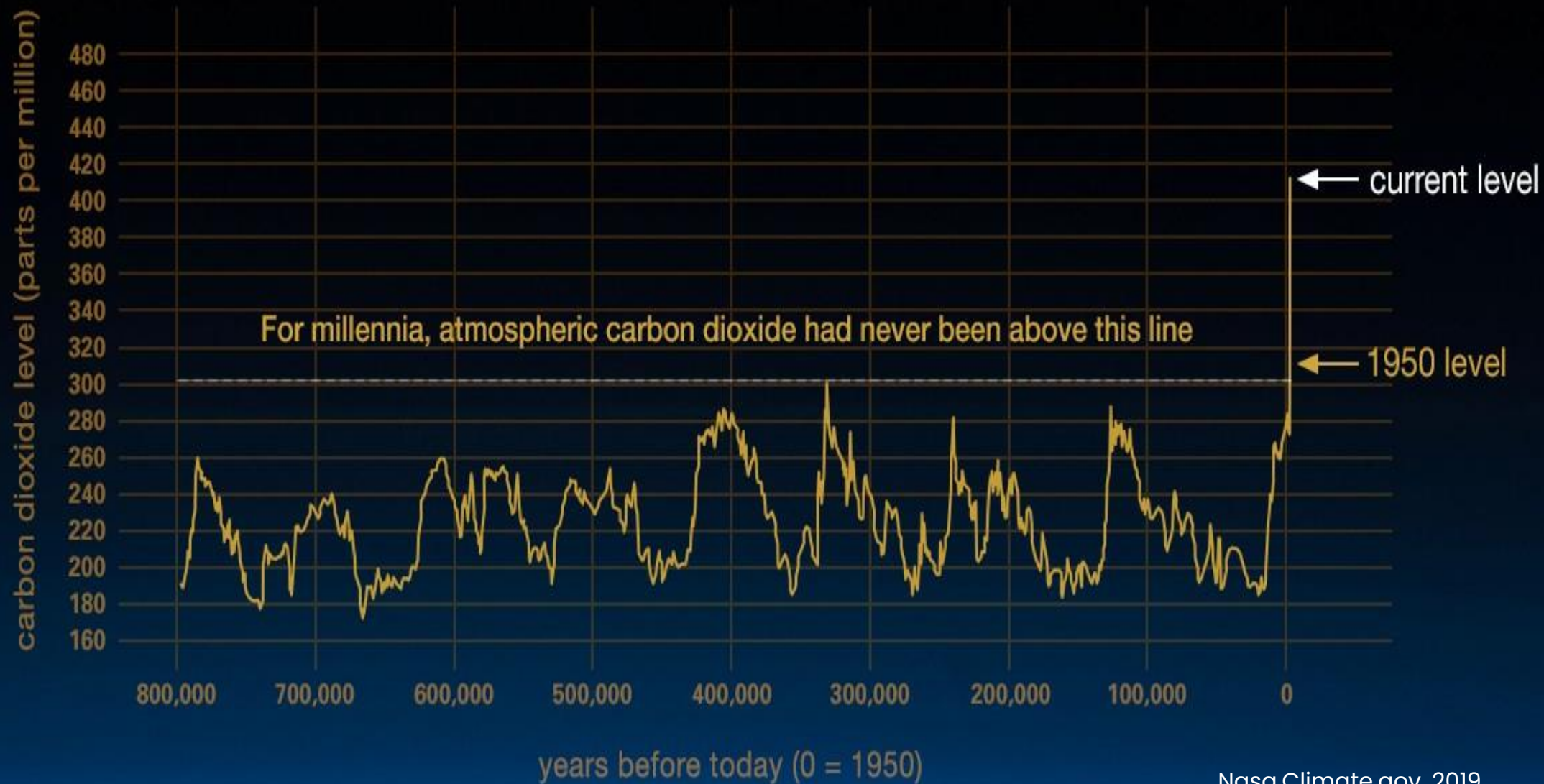
In times of profound crisis
in the economy and in
politics, non-profit
organizations, like
universities, are the only
social actors able to make
a change towards new
sustainable trajectory

Joseph Stiglitz,
premio Nobel per l'economia

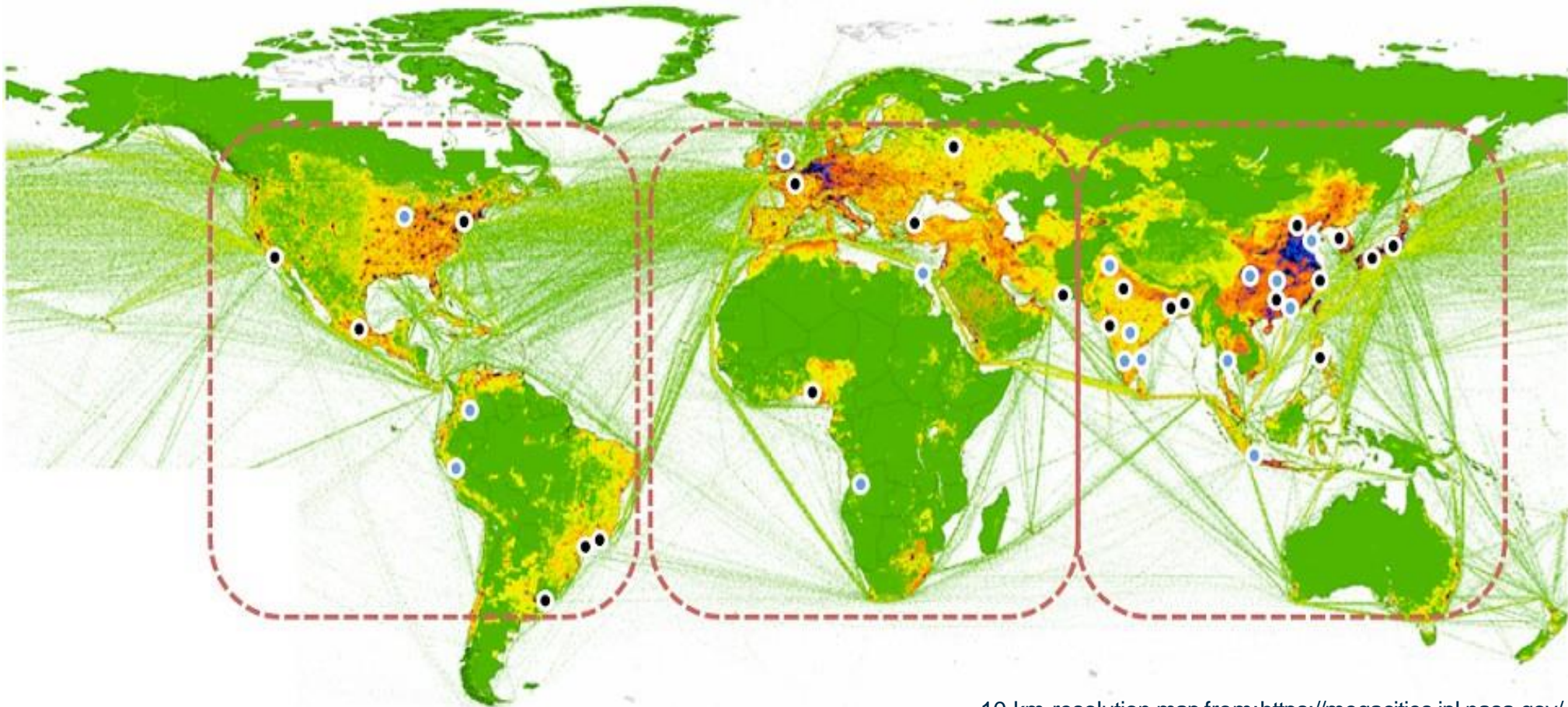
«Antropocene»

Paul J. Crutzen, Nobel Prize 1995

(2019)



Fossil fuel CO₂ emission sources: distribution and intensity



10-km-resolution map from: <https://megacities.jpl.nasa.gov/>

Shenzhen, 1980



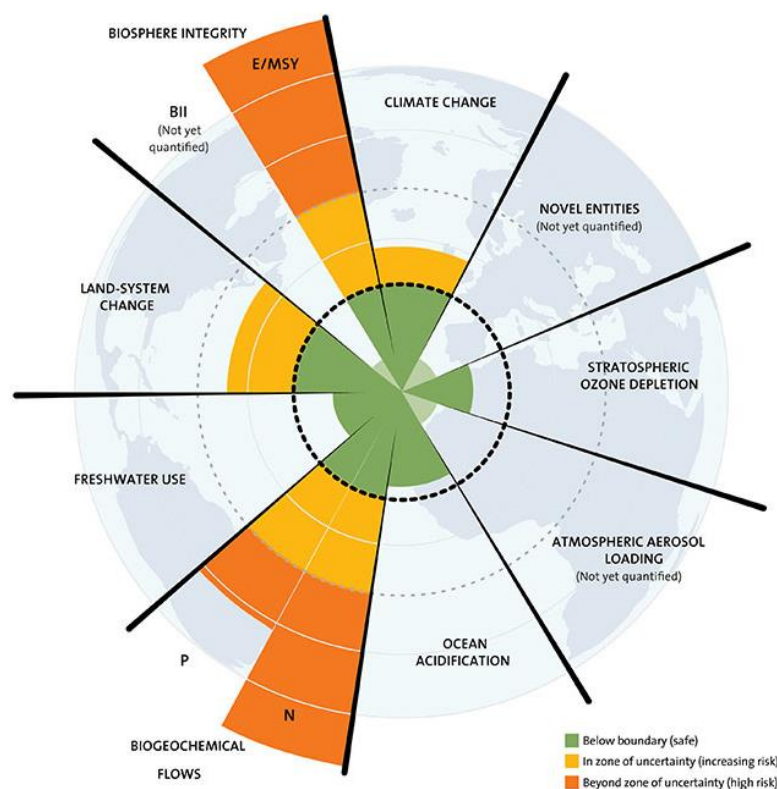
Shenzhen, 2013



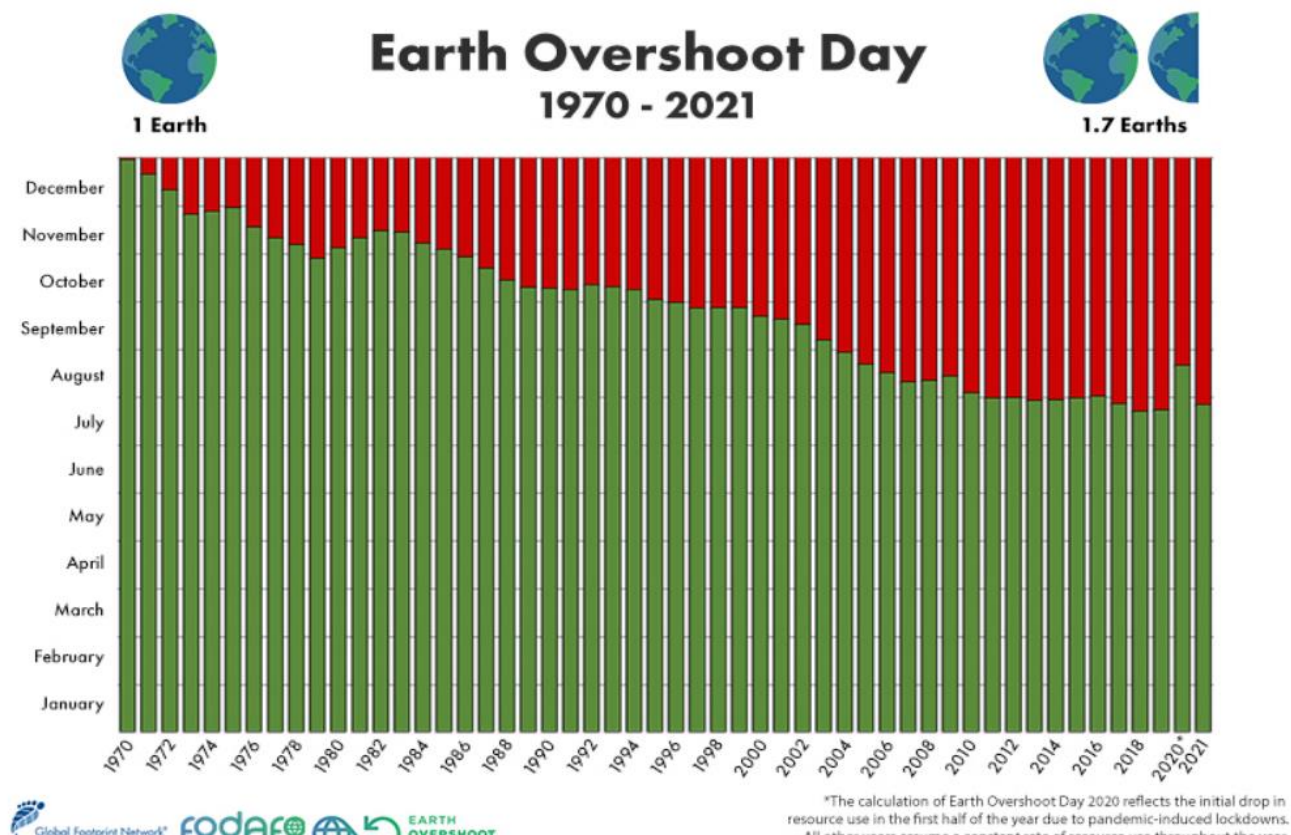
HUMAN IMPACTS ON THE PLANET

29 July 2021 was the Earth Overshoot Day
and for Italy was 13 May

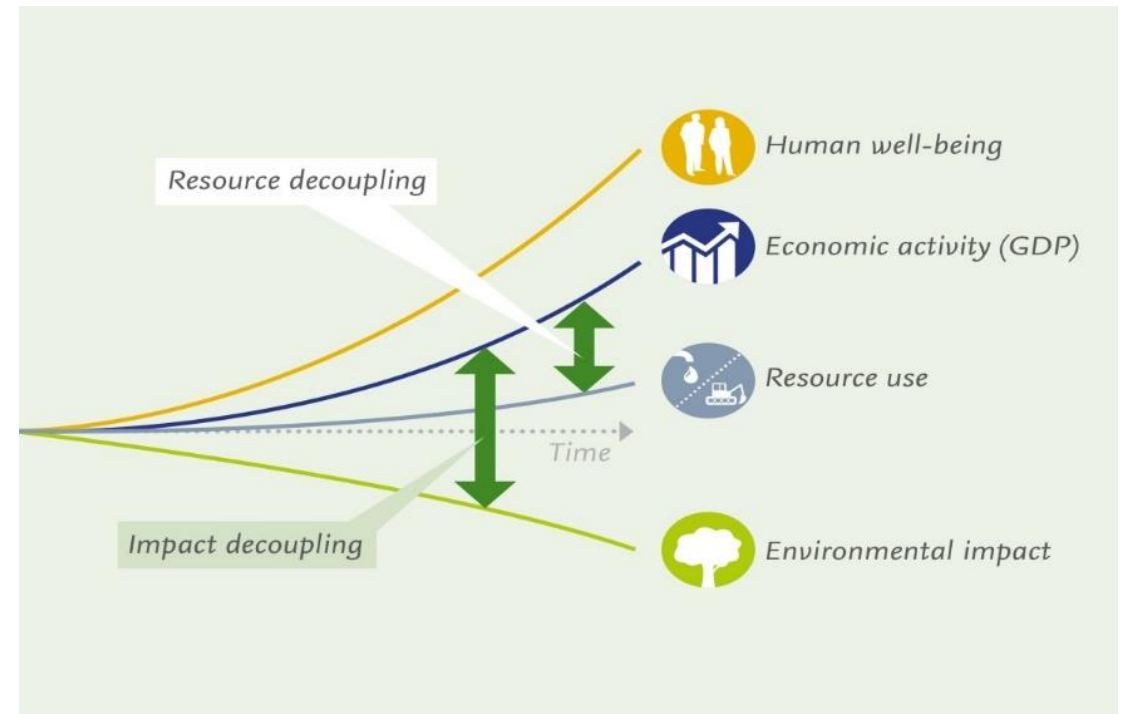
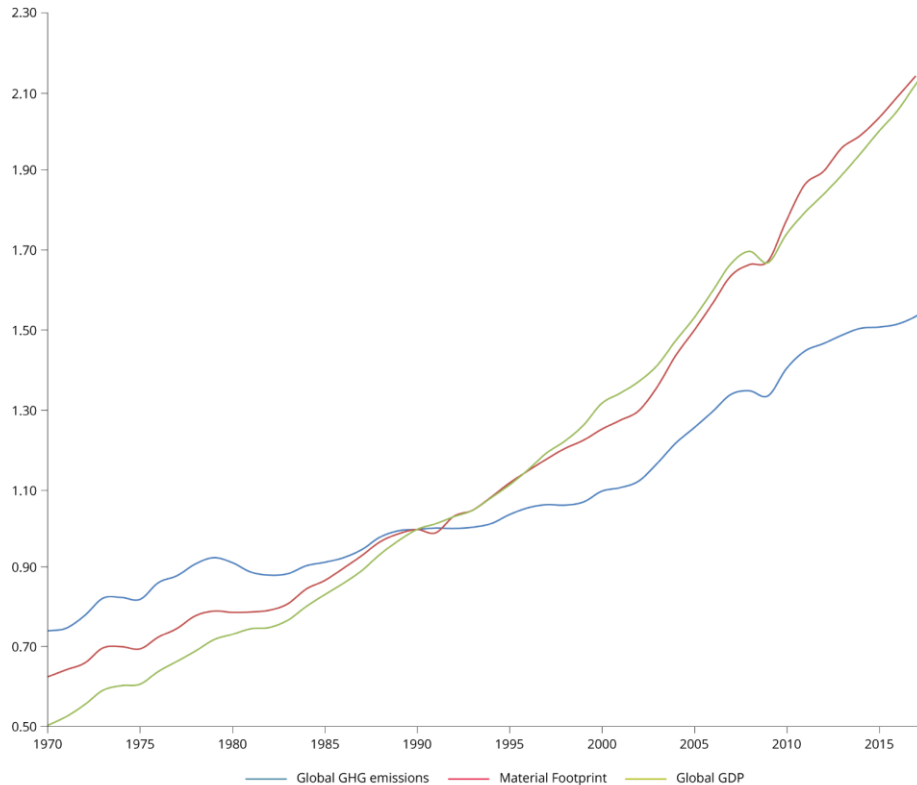
Planetary limits



Source: Steffen et al. 2015



Correlation between GDP and GHG

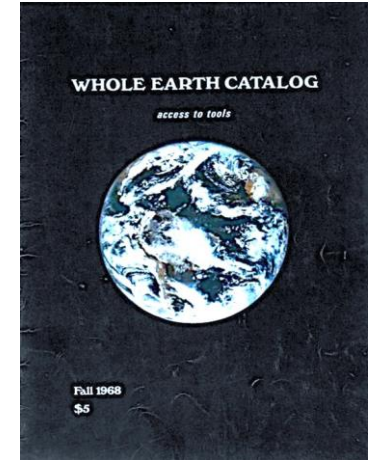


Sources: Modified from Wiedmann et al. (2020).

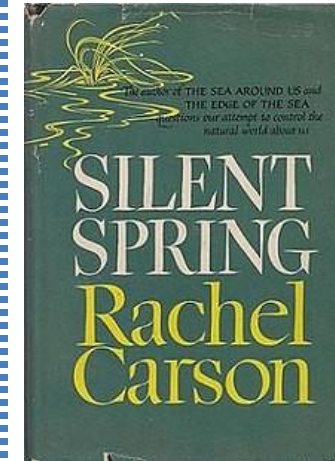
Youth protagonism



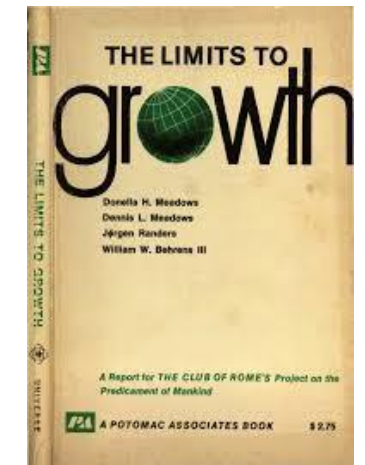
Stewart Brand, *Whole Earth Catalog*, 1968

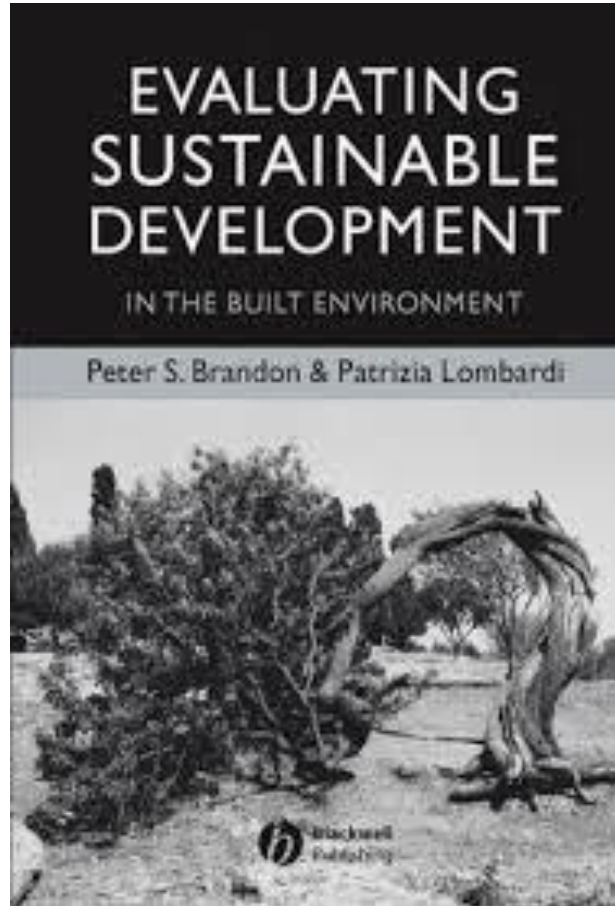


Rachel Carson, *Silent Spring*, 1962



D. H. Meadows, D. L. Meadows, J. Randers e W. W. Behrens III, *The limits to growth*, 1972



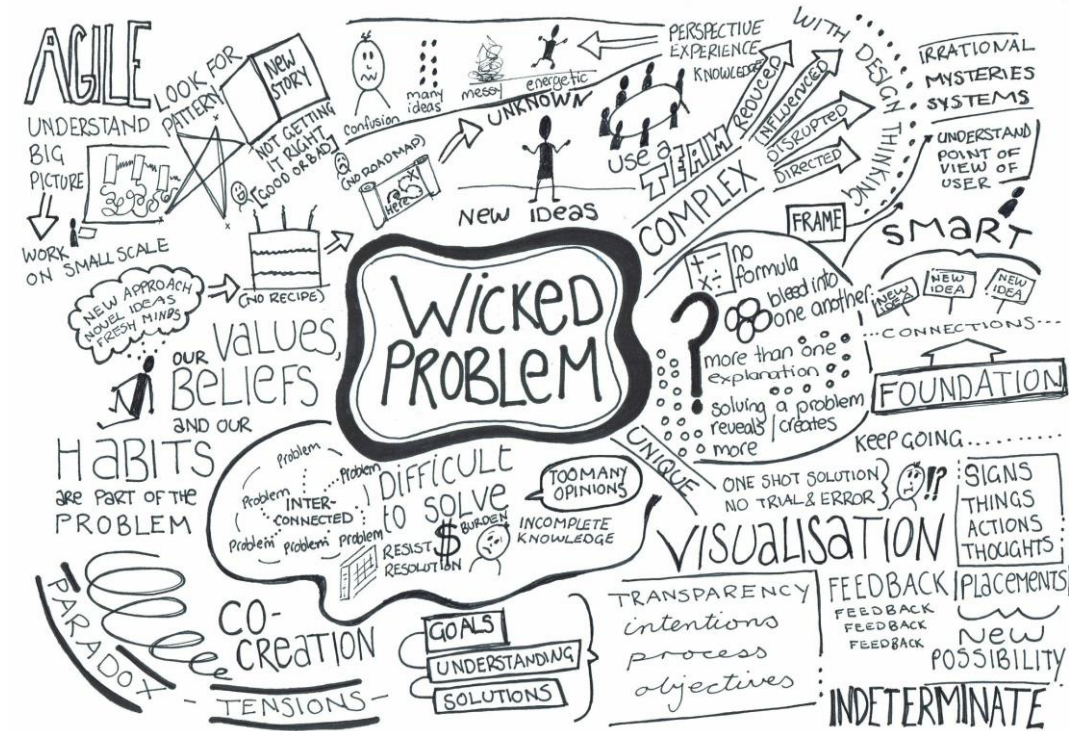
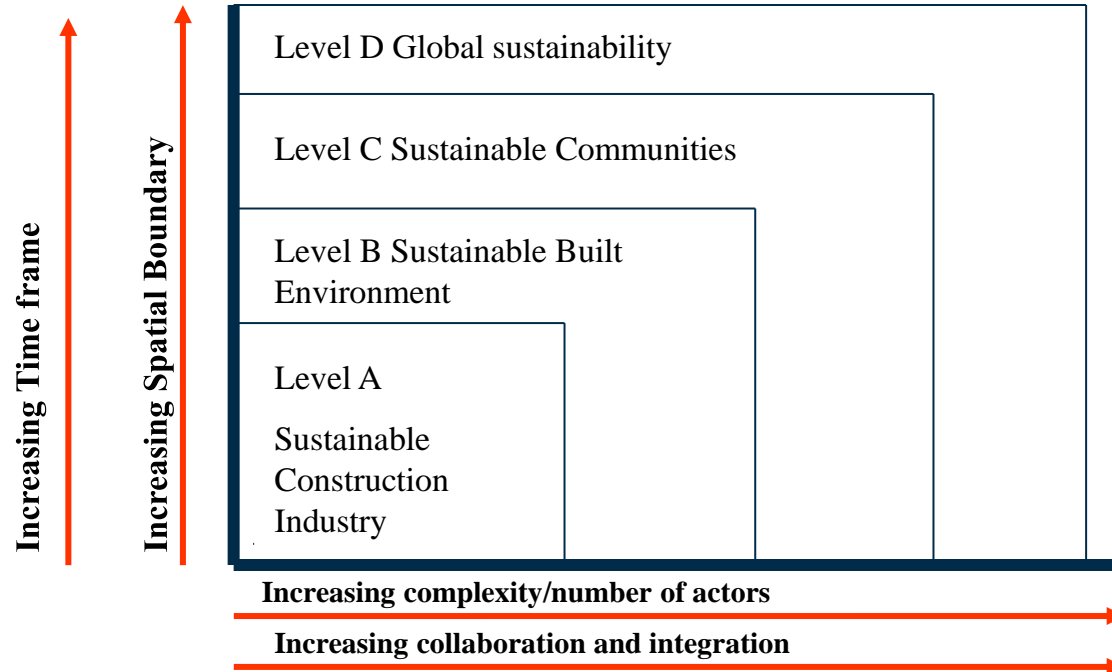


“At the heart of the sustainable development agenda is the question of management”

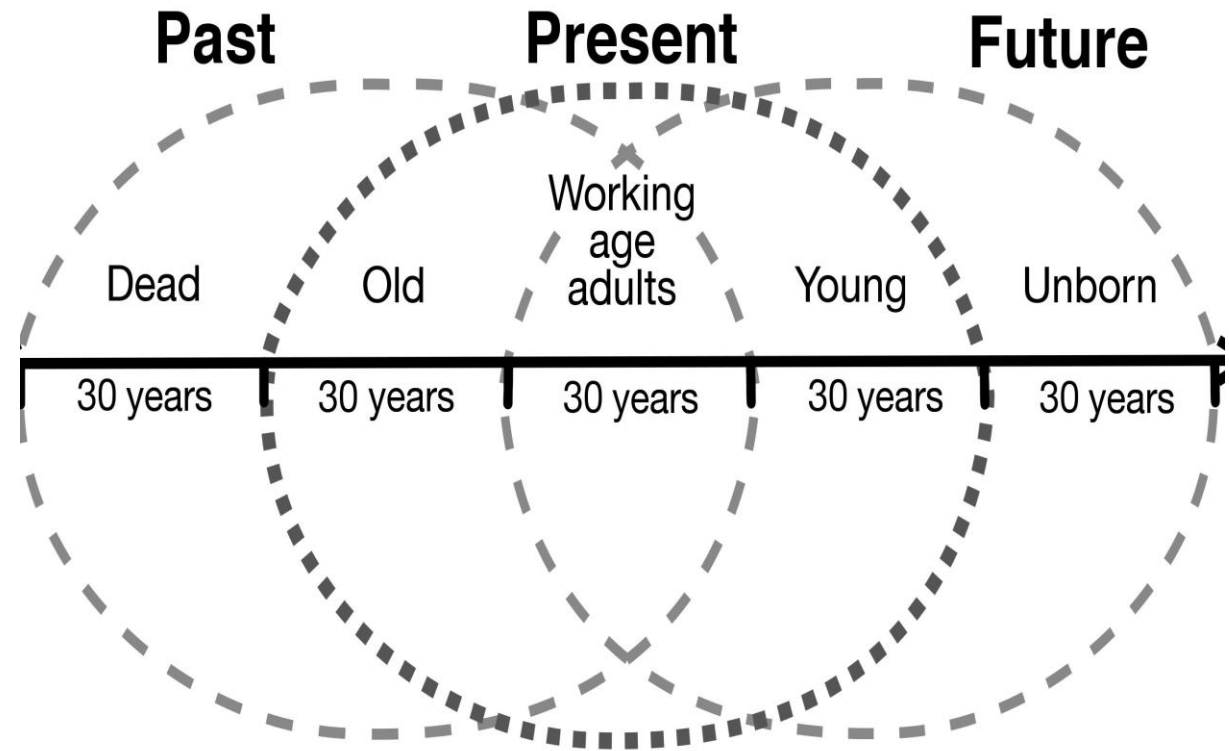
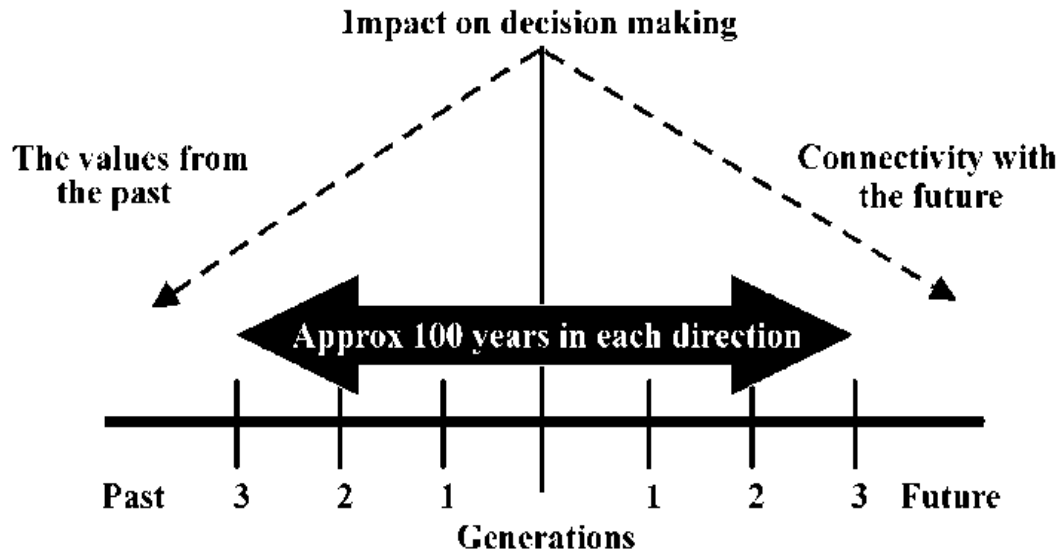
(Brandon and Lombardi, 2005; II ed. 2011)

- Wrong decisions can lead to critical consequences, increase human suffering, and precipitate current environmental and economic crises.
- **Improving the basis for sound decision-making is a high priority.**

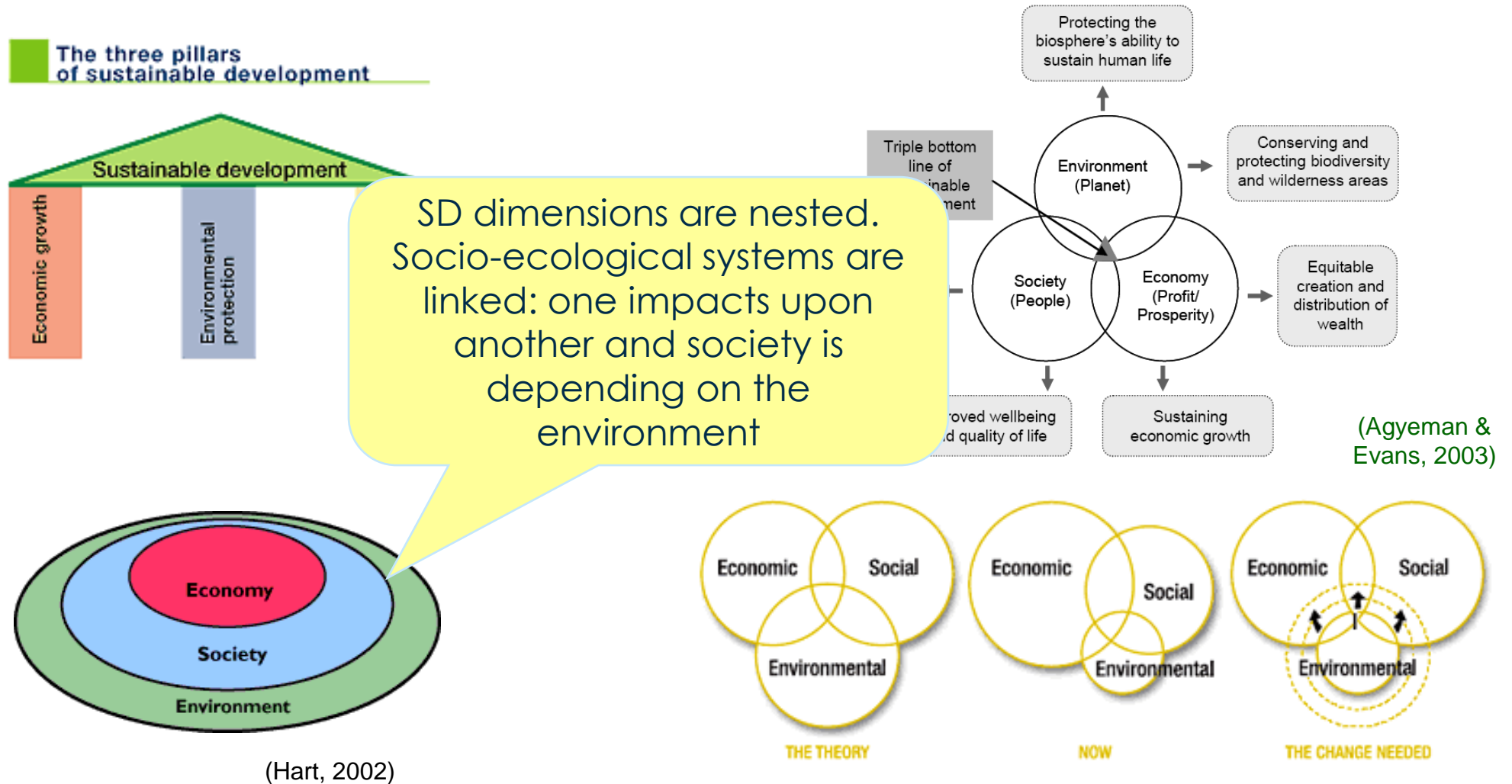
Decision making problems at territorial level



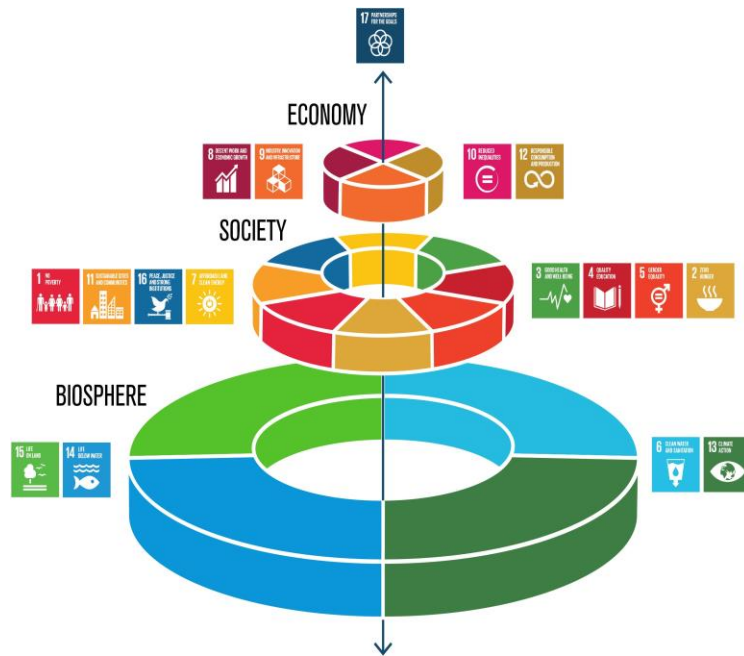
Impact on decision making



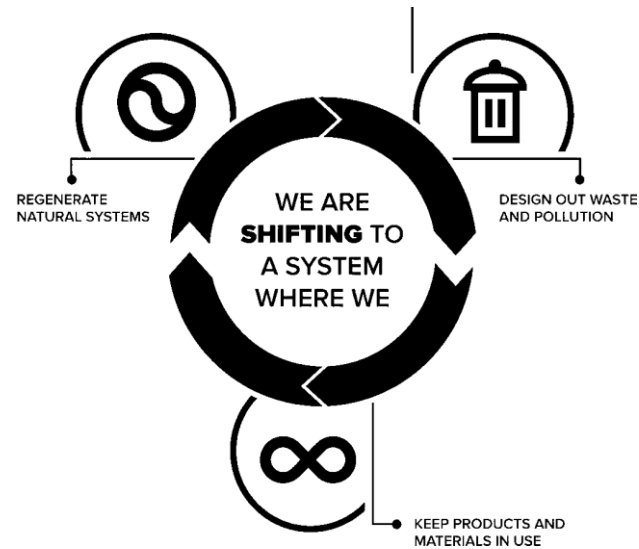
Sustainable development models



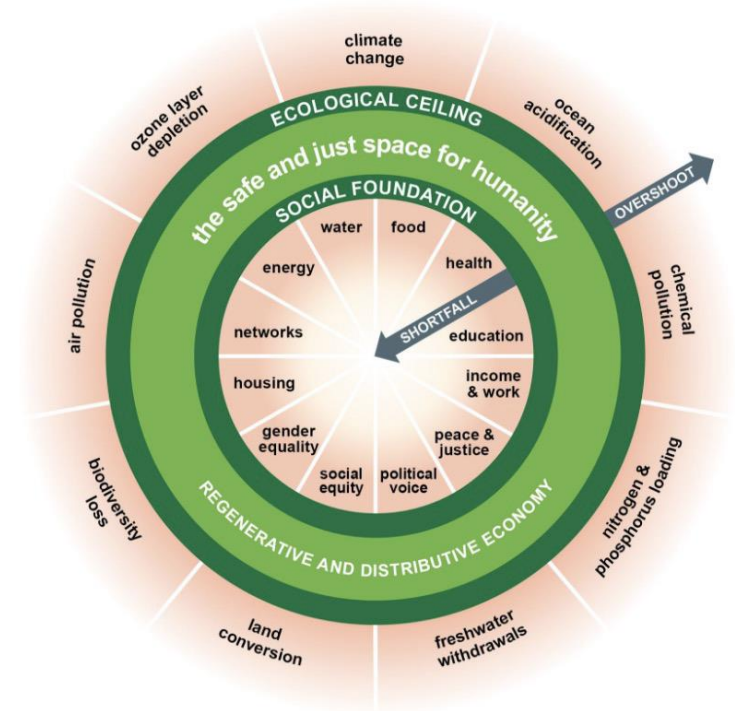
New frameworks for decision making



Rockstrom



Ellen MacArthur Foundation

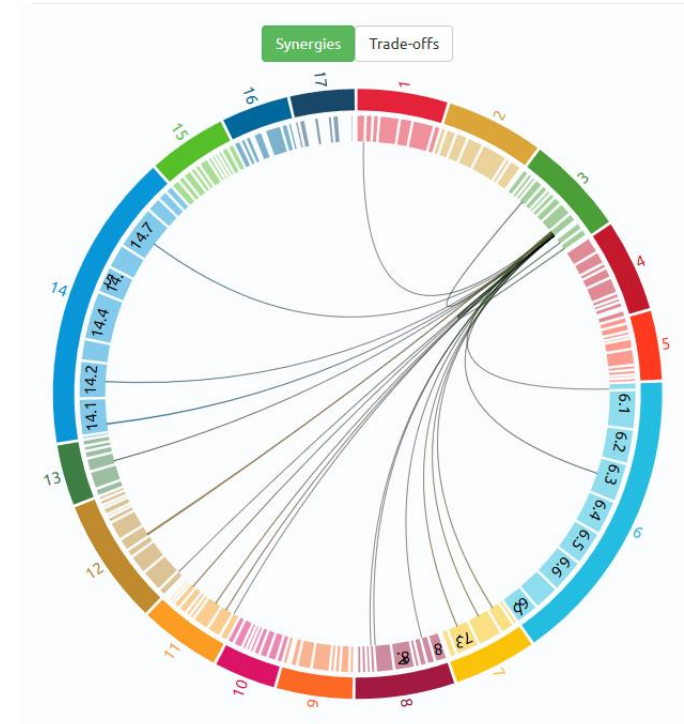


Kate Raworth

New measuring systems with interlinkages

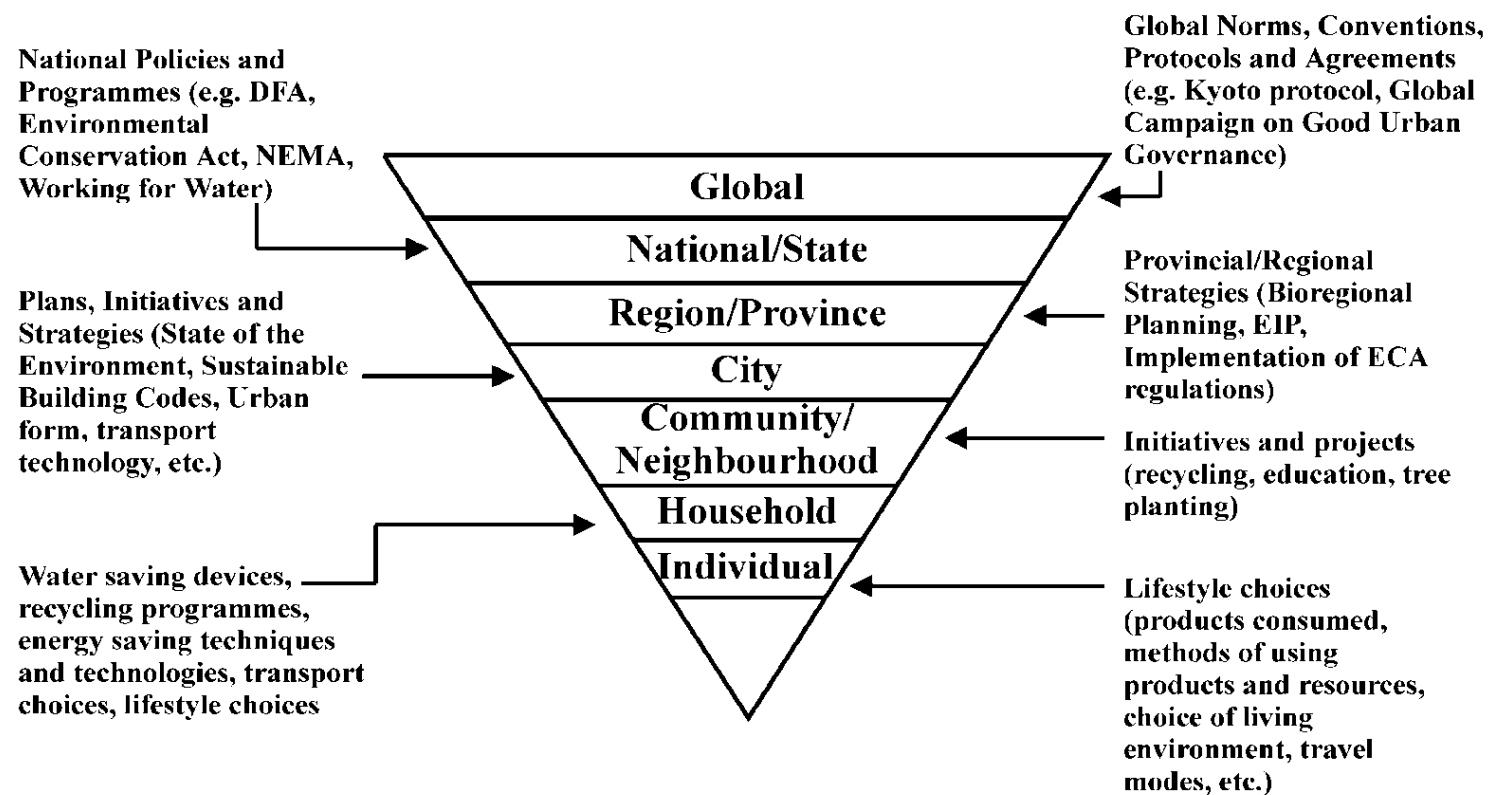


ISTAT (2019) analyses interconnections based on the use of same metadata and indicators for the assessment of the achievement of SDGs.



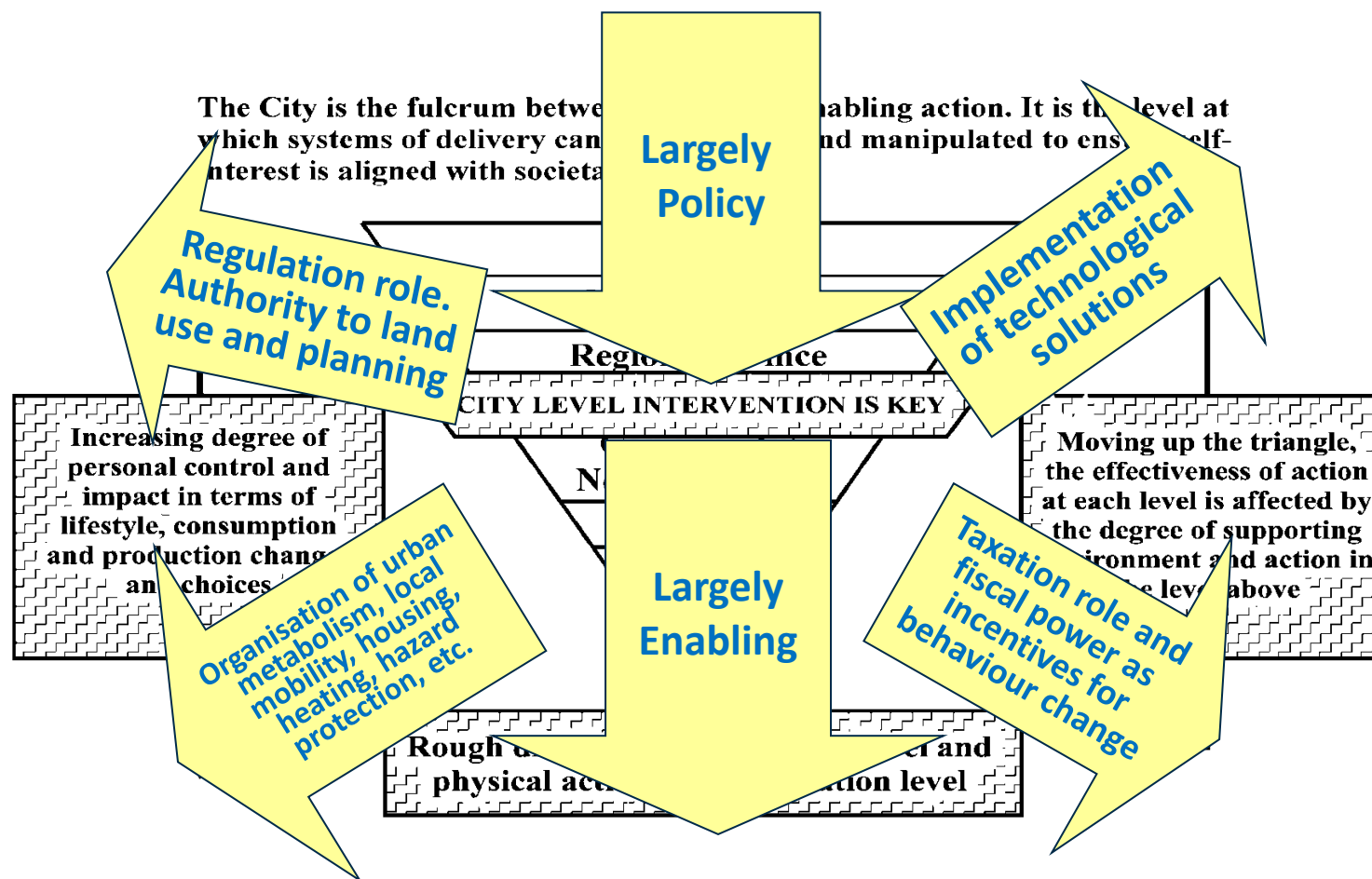
KnowSDG platform. The JRC started to experiment the analysis of interlinkages between different SDGs through a literature approach that also included European Policies about Sustainable Development. They develop a platform that provides a tool to visualize the cumulated interlinkages.

The role of cities is crucial



(Brandon & Lombardi 2011)

The role of cities is crucial

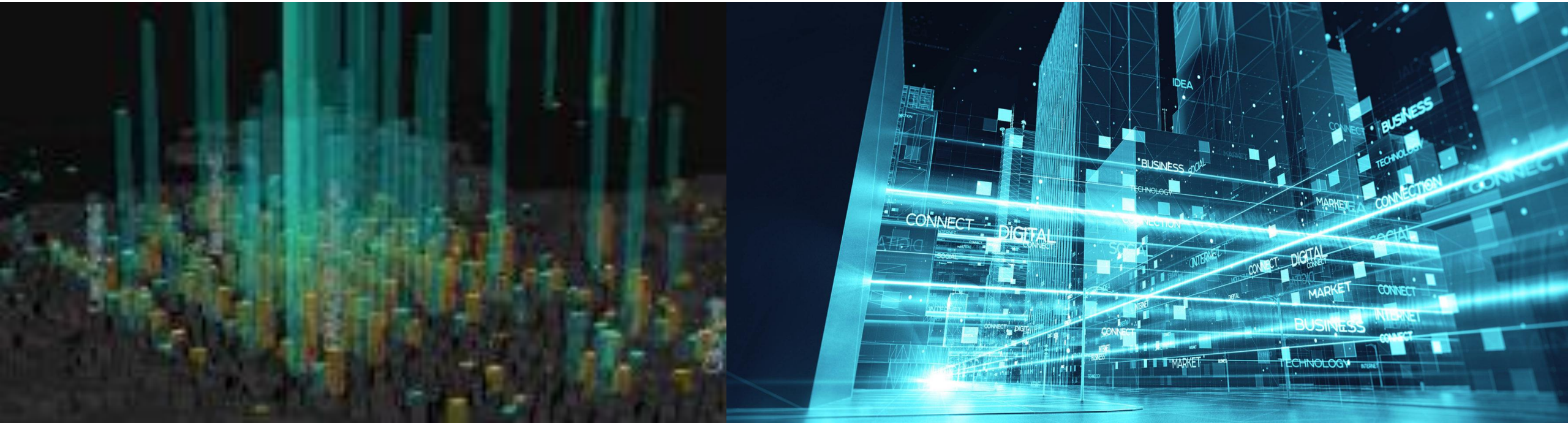


(Brandon & Lombardi 2011)



Politecnico
di Torino

Technology can help



The visualisation strengthens the human visual system to support the analysis of **large amount of information**

(Heer e Agarwala, 2008)

<https://www.agendadigitale.eu/smart-city>

DIGITAL TWINS

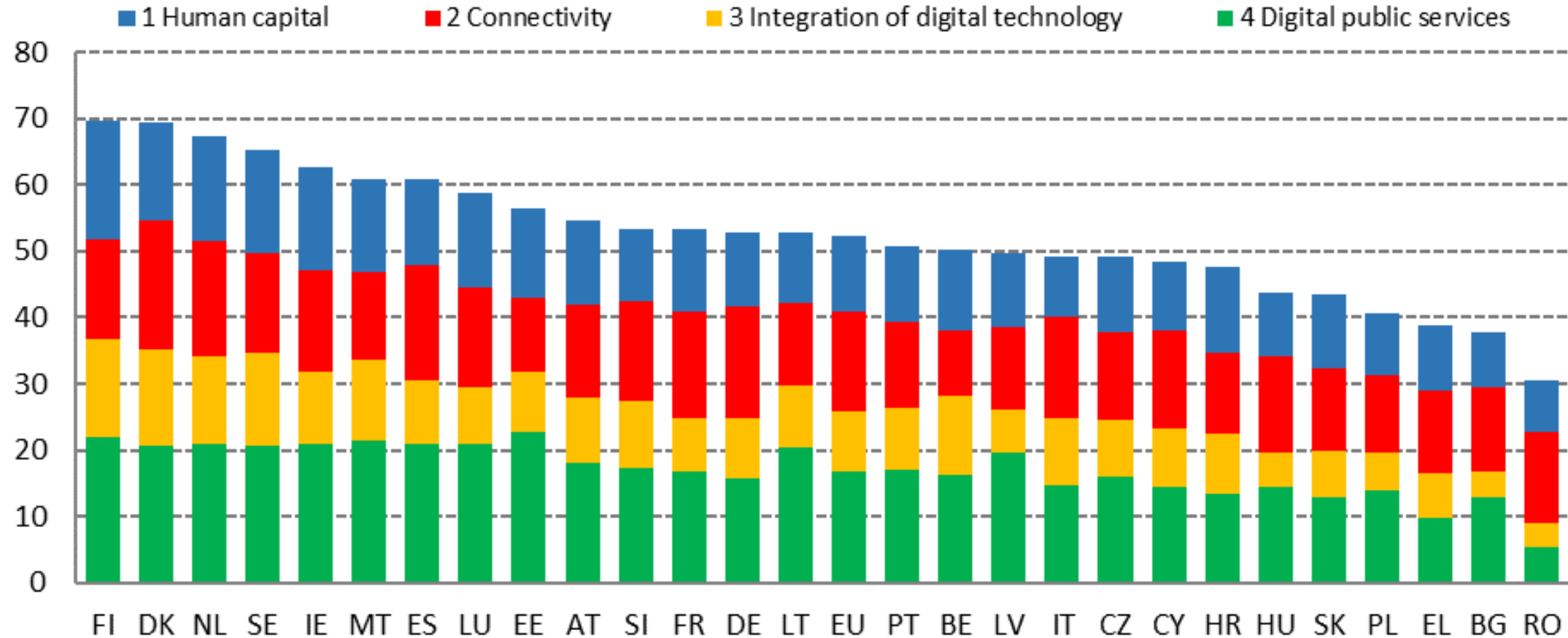
3-dimensional modeling of cities

New interactive participative dashboards for smart cities

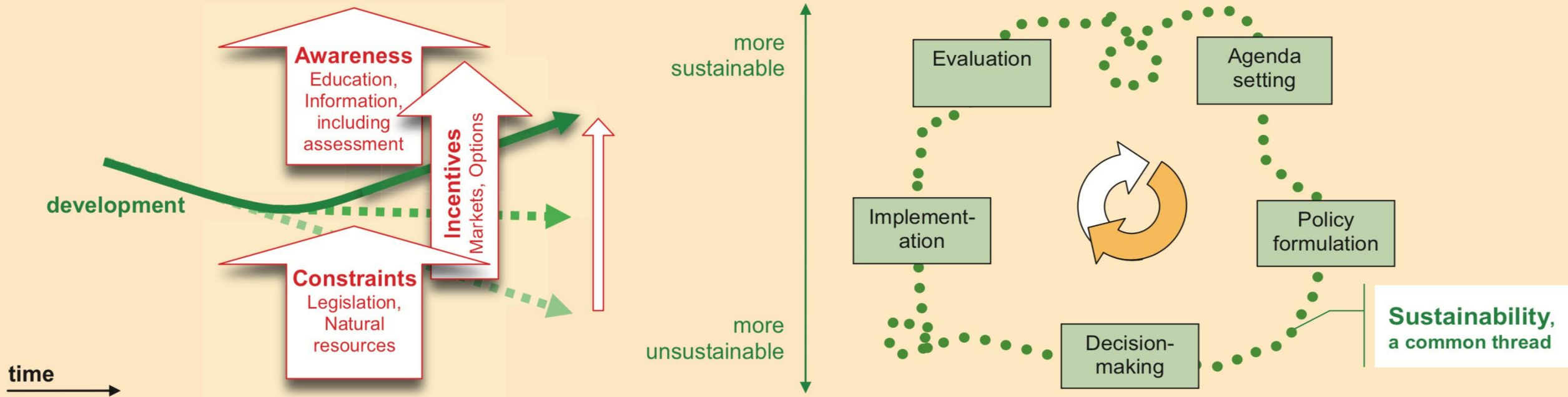
The screenshot displays the Planet Smart City website. At the top, there are logos for Planet Smart City, the University of Turin, and the Department of Urban Planning and Architecture. Below the logos, there are six circular icons representing different indicators: Energy Usage, Public and Green Spaces, Access to Key Services, Accessibility Services, Economic Savings, and Benefits. The main content area is titled "INTERACTIVE IMPACT ASSESSMENT TOOL (IAT)" and includes an "Introduction" section with text about the tool's purpose and a "How does the tool work?" section with a list of questions. At the bottom, there are four small images showing various smart city applications: a modern building, a green space, a construction site, and a person using a smart device.

The screenshot displays the Dashboard Turin interface. At the top, there is a blue header with the text "DASHBOARD TURIN" and a "DIMMER" button. Below the header, there is a 3D map of the city of Turin. The map shows various streets and buildings, including Corso Luigi Einaudi, Corso Garibaldi, and Corso Vercelli. On the right side of the map, there is a "Layers" panel with a list of layers: Census Areas, Roads, Case Buildings, District Buildings, and Cost Analysis Selection. Below the Layers panel, there is an "Indicators" panel with a list of indicators: Energy Usage, Public and Green Spaces, Access to Key Services, Accessibility Services, Economic Savings, and Benefits. At the bottom of the map, there is a "Tools" panel with an "Activate" button.

The need for digital competences

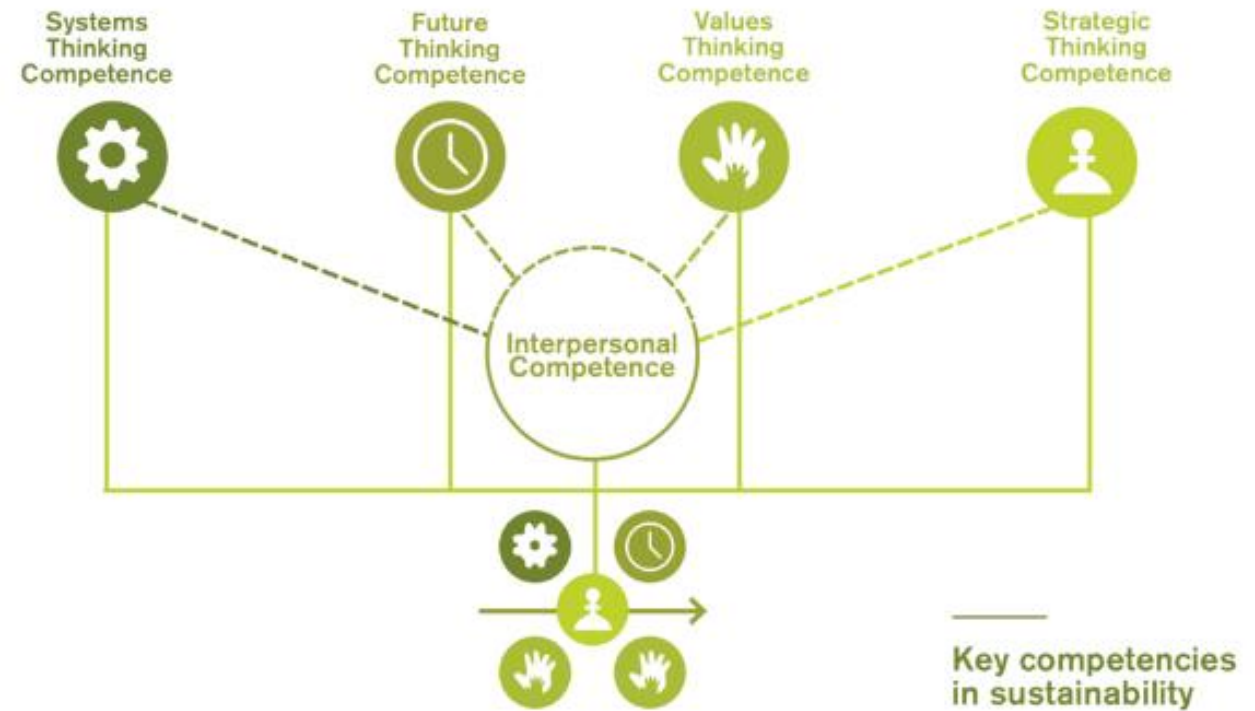
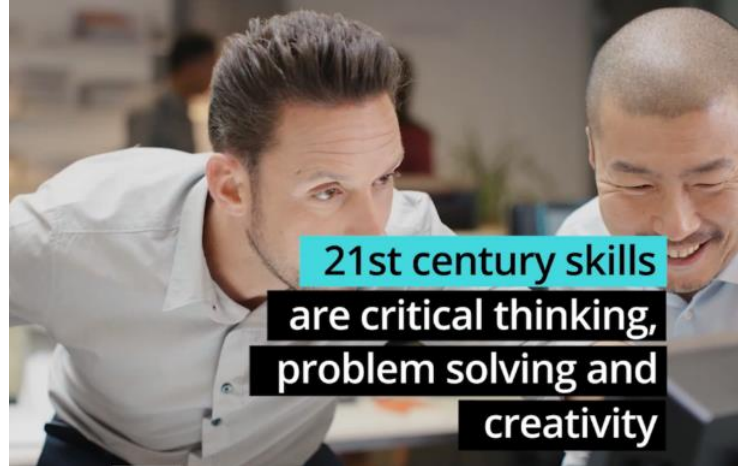


The role of education and evaluation



Nick Bonvoisin

The competences for sustainability





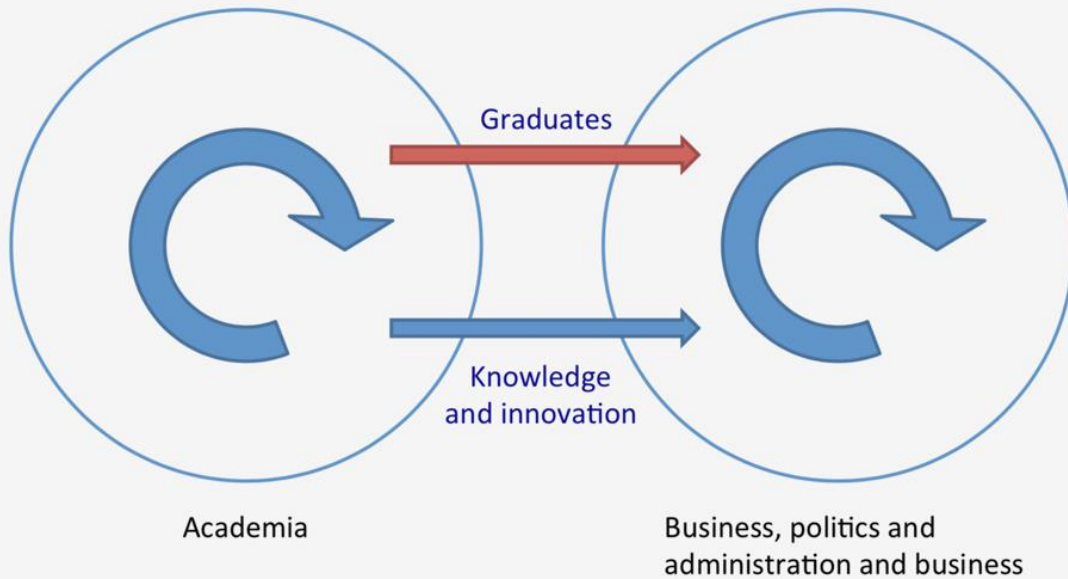
Politecnico
di Torino

Paradigm shift for university



From: Peter Edwards, Director, Future
Cities Lab, Singapore-ETH Centre

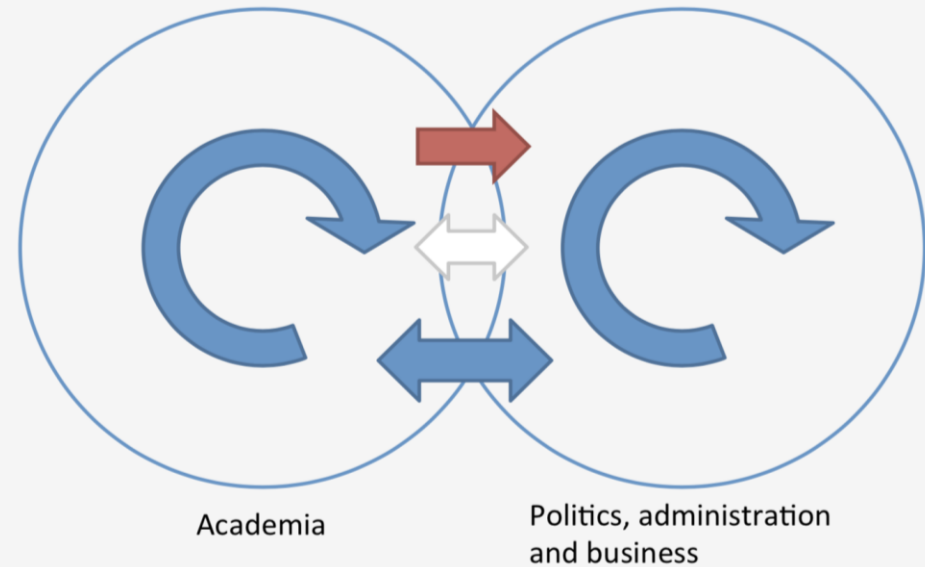
Supporting a growth-based economy



Innovations judged by their success in the market place

From: Peter Edwards, Director, Future
Cities Lab, Singapore-ETH Centre

Supporting societal transformation

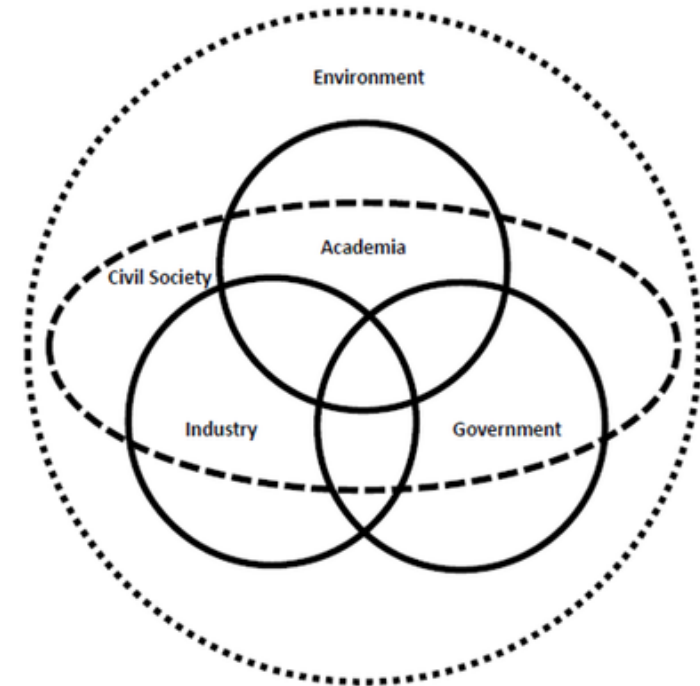


Education
Staff mobility
Co-production
of knowledge

Innovations also by their contribution to societal goals

New frameworks for university

European Strategy for Universities (Com/2022/16 Final)



Goddard, Hazelkorn, Kempton and Vallance (The Civic University, 2016)

Elias G. Carayannis and David F.J. Campbell,



An overview of university contributions to the SDGs.

THE NETWORK OF UNIVERSITIES FOR SUSTAINABLE DEVELOPMENT



Officially established in 2015 by CRUI



~700

delegats

climate
change

food

education

energy

~1,8M

students

7

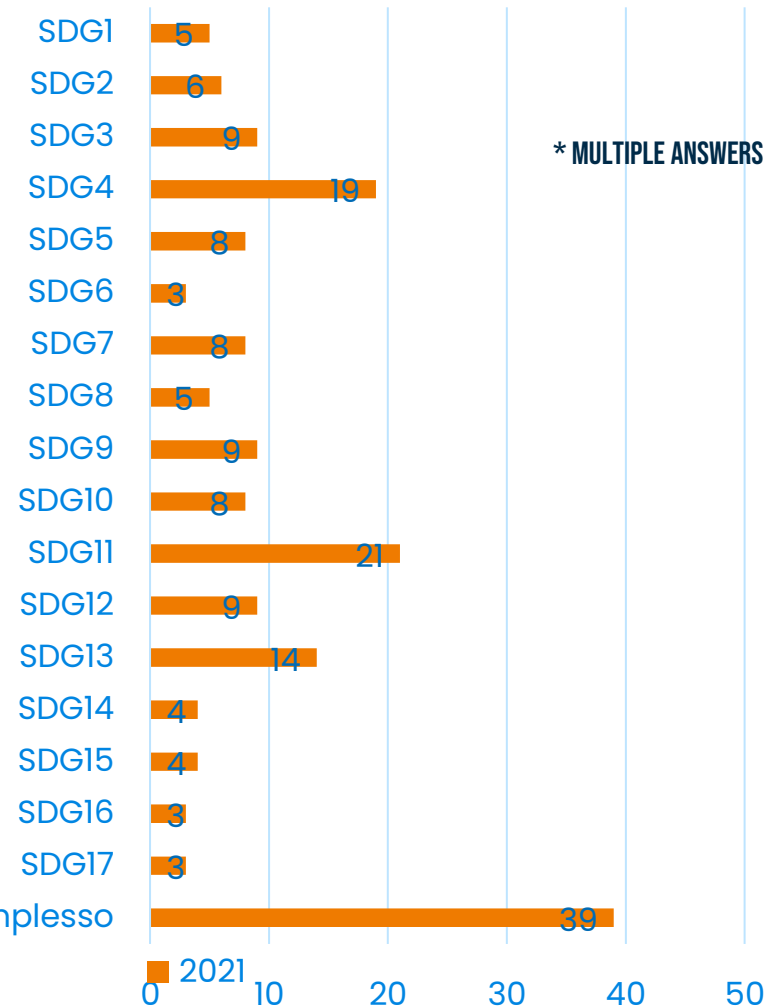
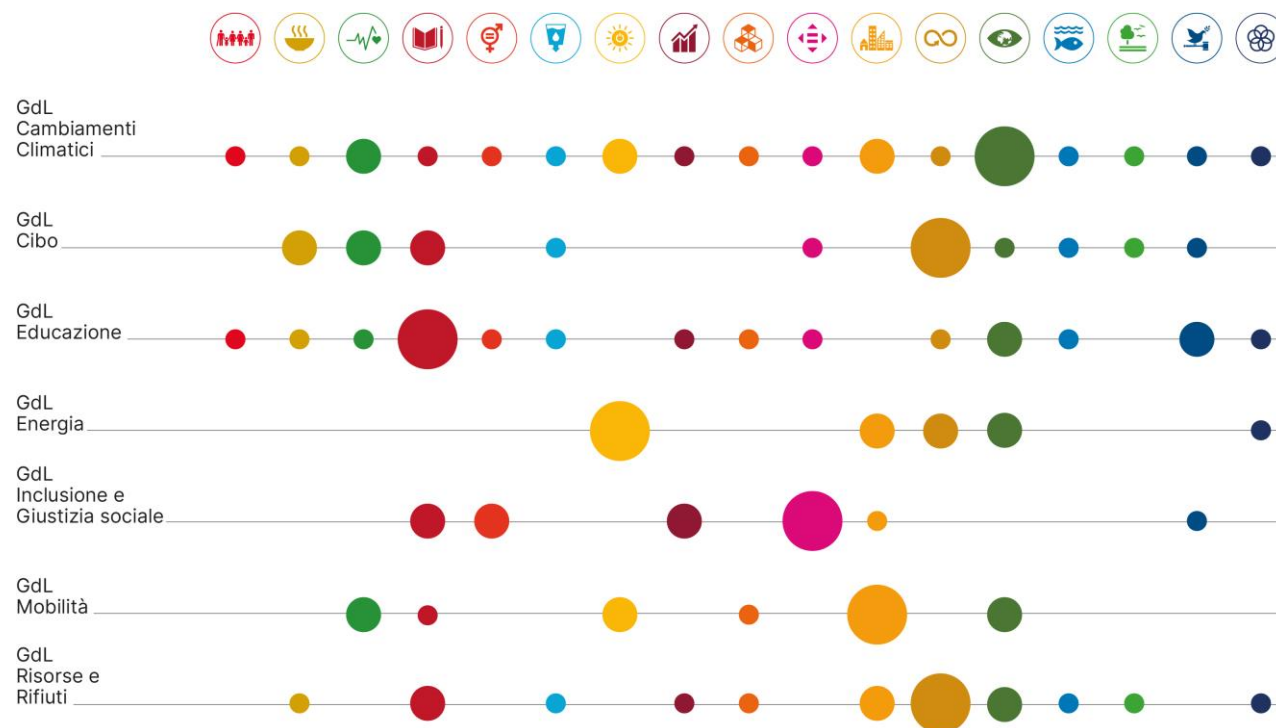
Working groups

inclusion and
social justice

mobility

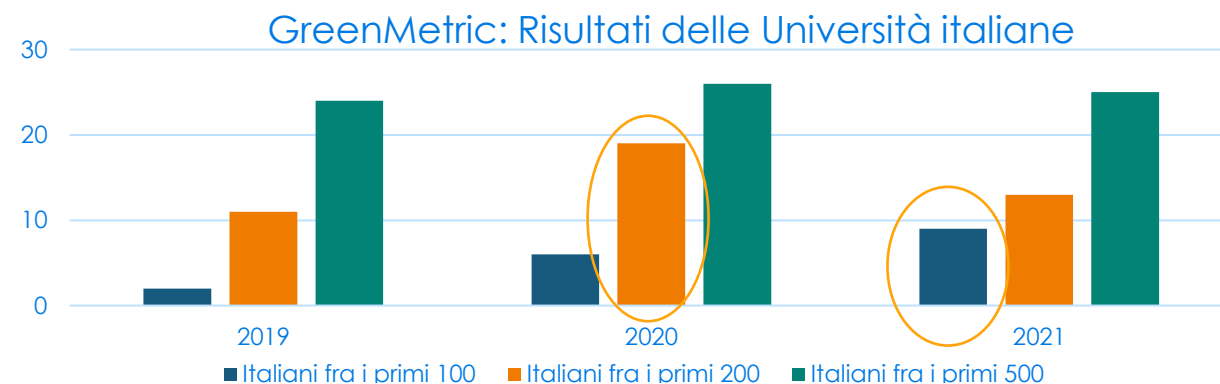
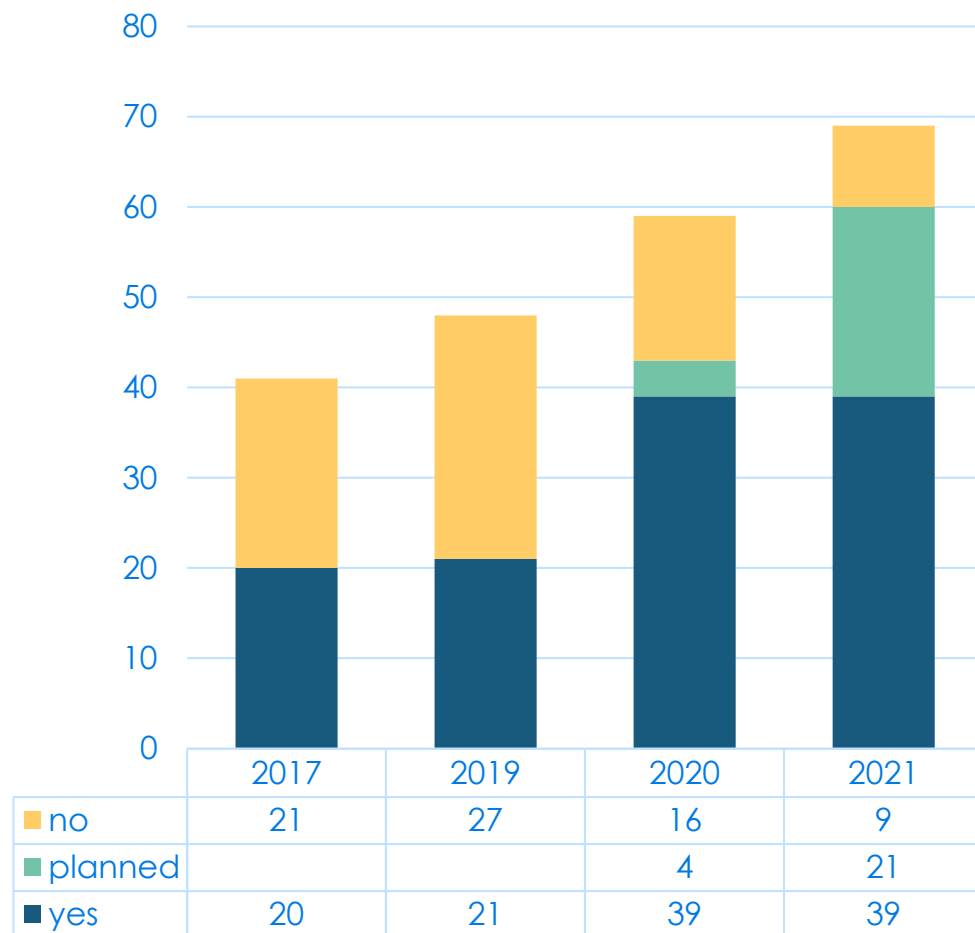
resources
and waste

SDGs – FIELDS OF ACITIVITES



Some evidence

University units dedicated to sustainability





Politecnico
di Torino

Awareness

Target – public audience

Conferences (e.g.):

- The Rectors Manifesto, Udine, 2019
- Climate Exp0, May 2021
- Expo2020, Dubai, 2022

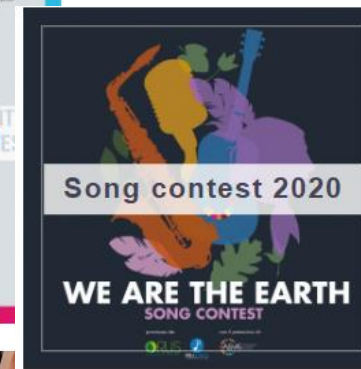


Target – RUS universities' communities

Annual conferences

Climbing for climate

Collection of initiatives for national events: M'illumino di meno, Festival for Sustainable development by ASviS



Target – students

Challenge-based activities: Unisustainathon, Mapathon, Expo2020, ...

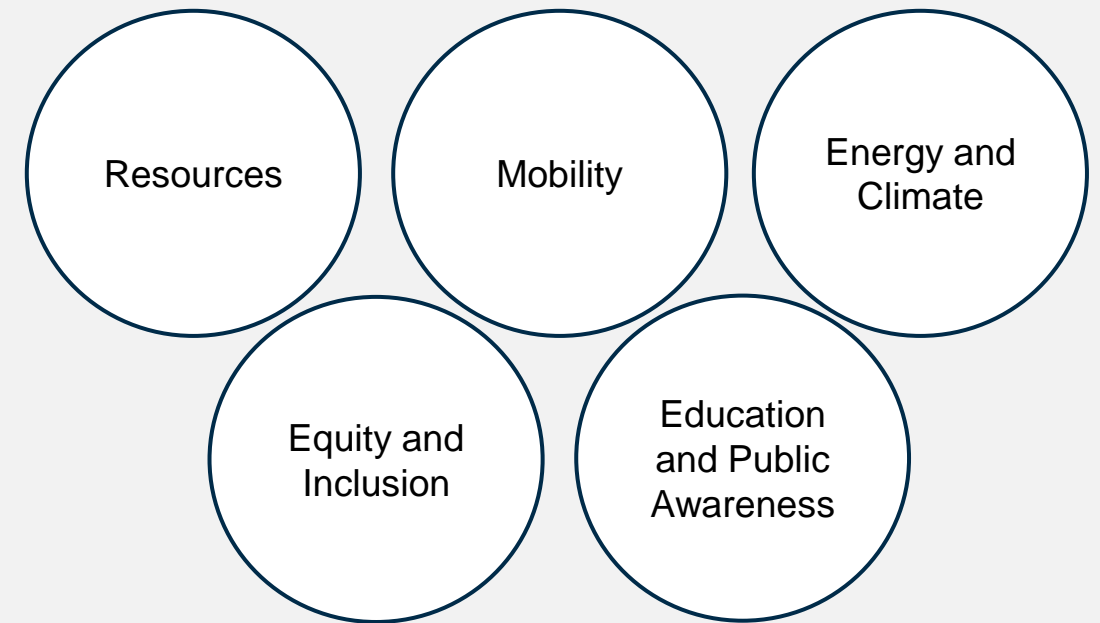
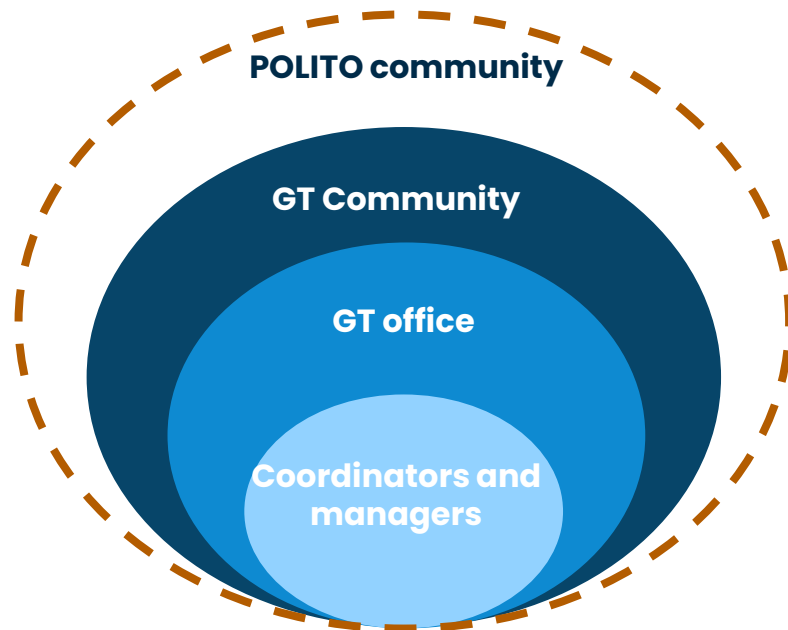
Contests: song contest, contest for the cover of the annual RUS report



The green team – A Multidisciplinary Team for a Sustainable Campus

OBJECTIVES

- › Raise awareness on sustainability issues
- › Develop external actions to promote the 2030 Agenda
- › Support sustainable development policies in the local and regional frameworks
- › Measure impacts of sustainability-focused actions



Five workgroups
Around 60 participants

Ranking



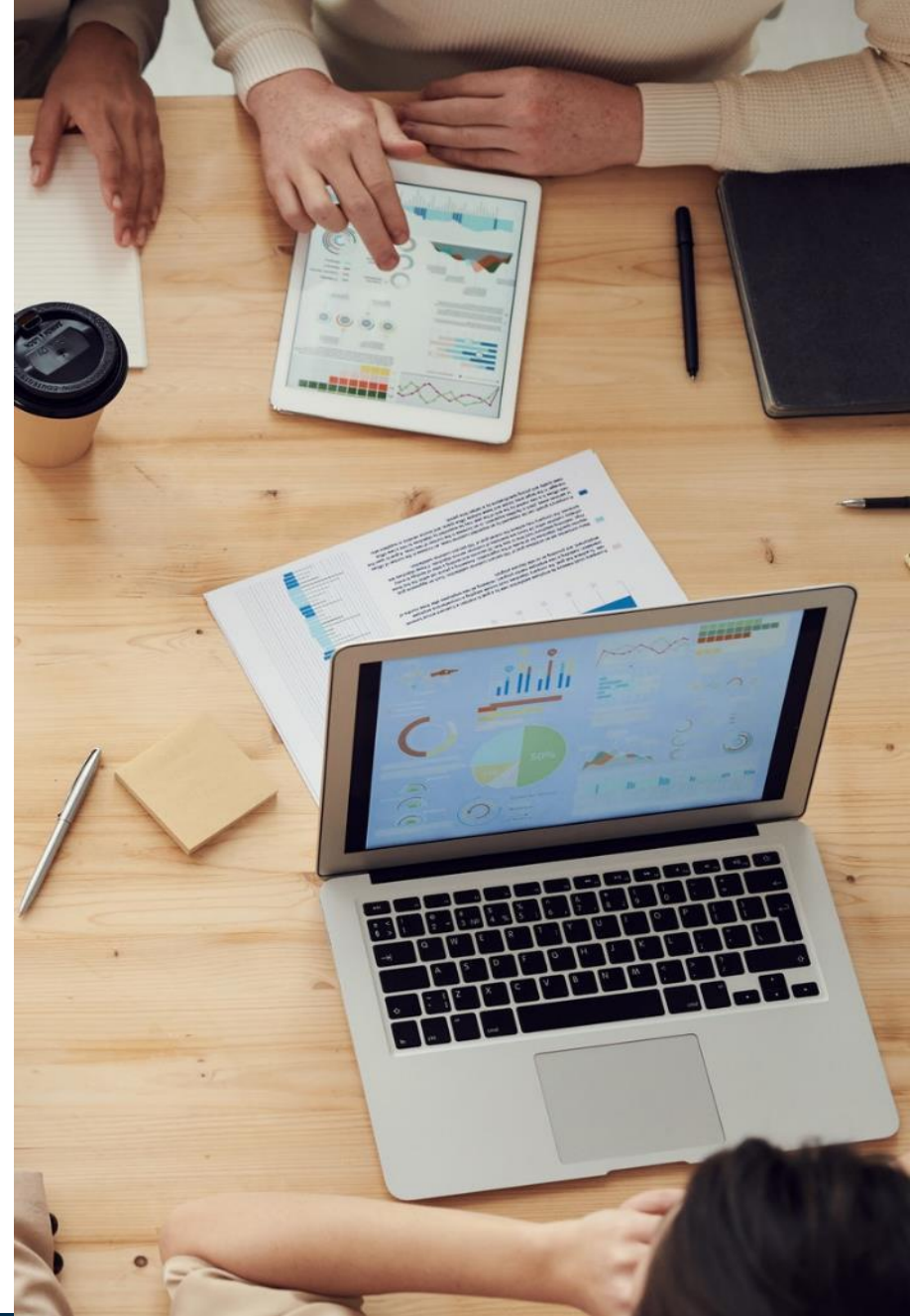
GreenMetric
edizione 2021

20° worldwide



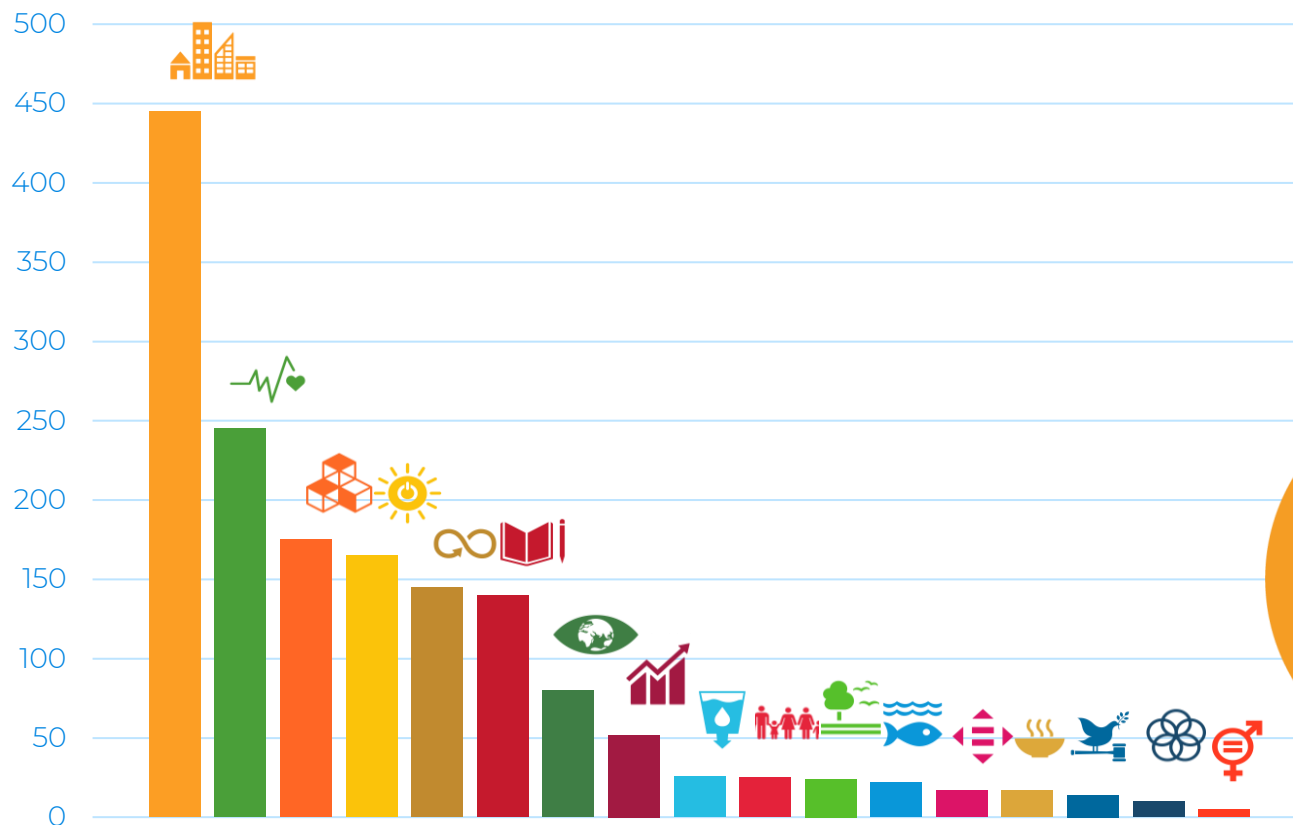
THE Impact
(Times Higher Education)
edizione 2021

88° worldwide on climate
action (SDG13)

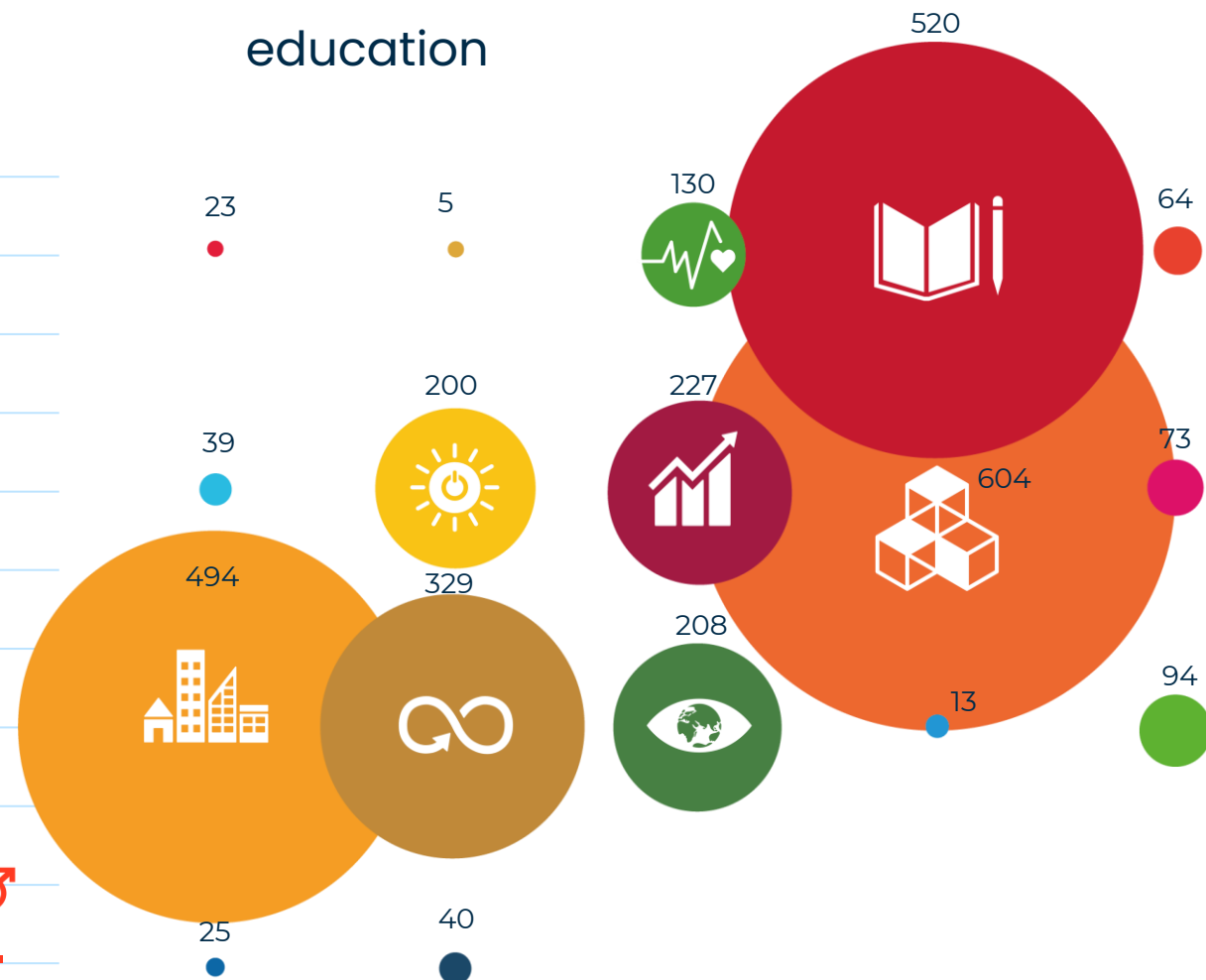


SDG mapping

research



education



SDG awareness

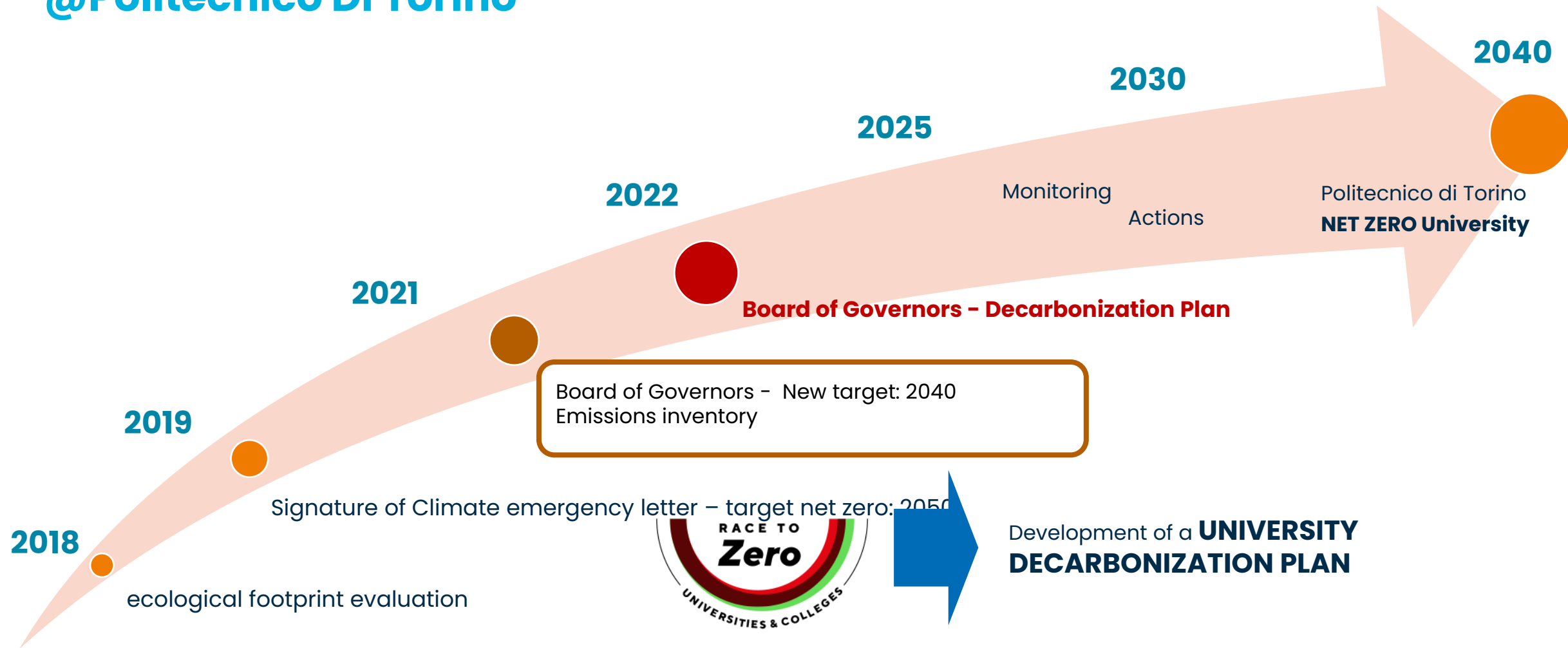
Which SDGs are more important for you?

According to you, which SDGs are more important for PoliTo?



PATH TOWARD CARBON NEUTRALITY

@Politecnico Di Torino



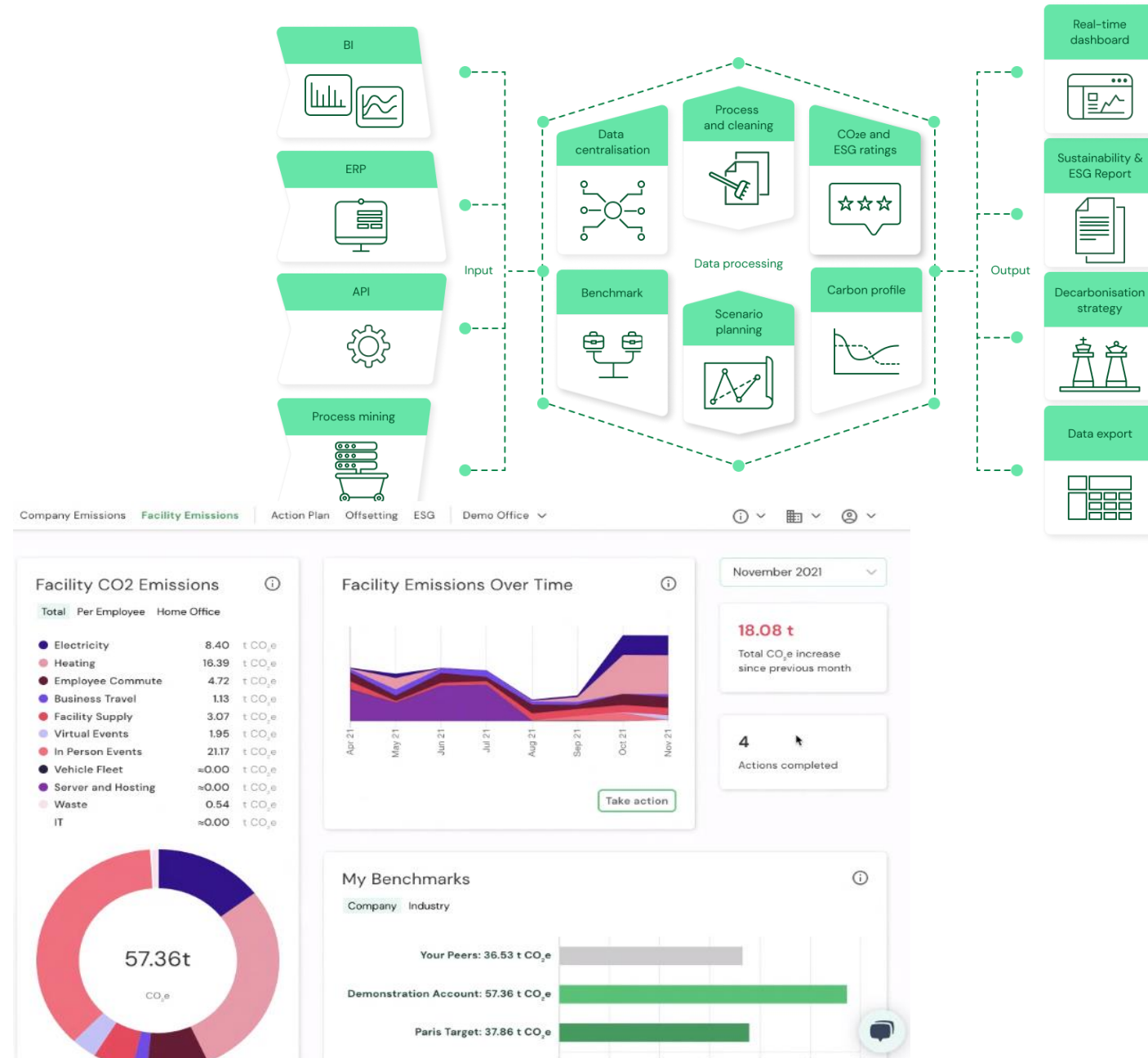
Monitoring dashboard

For the general framework of the inventory the tool offered by the startup PlanA was implemented in order to:

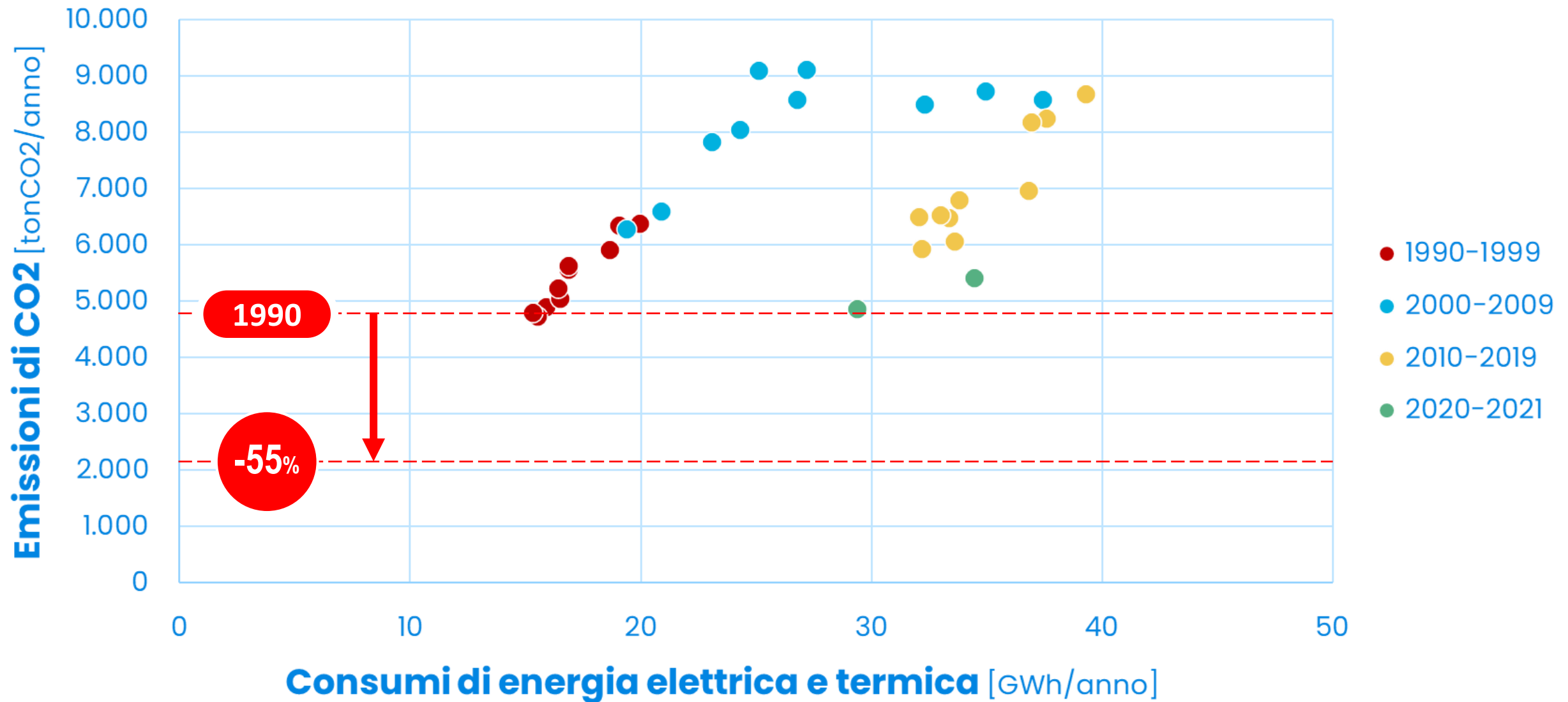
- **Include all the scopes** and emission sectors
- Use of a sound, **scientifically-based** and agreed methodology
- Possibility to have a **general overview** of PoliTO emissions (with a degree of uncertainty)

Then a focus on energy was done using real consumption data

planA



EMISSIONS vs CONSUMPTIONS



Find more



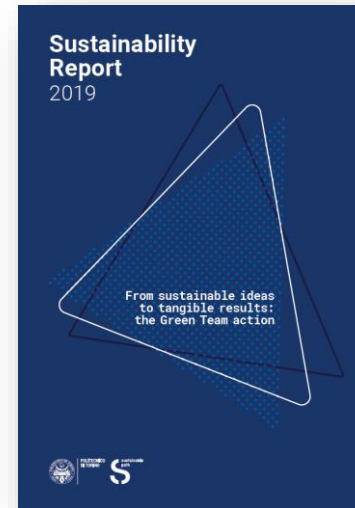
**SUSTAINABILITY
REPORT**
2016



**PROGRAMMATIC
DOCUMENT**
, 2017



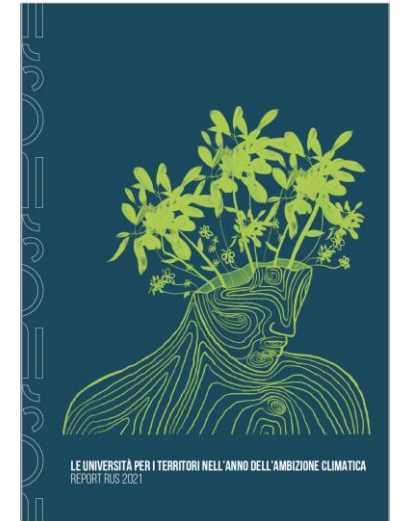
**SUSTAINABILITY
REPORT RUS**
2018



**SUSTAINABILITY
REPORT**
2019



**SUSTAINABILITY
REPORT RUS**
2020



**SUSTAINABILITY
REPORT RUS**
2021

www.campus-sostenibile.polito.it
www.reterus.it



@PolitoSust



politosust



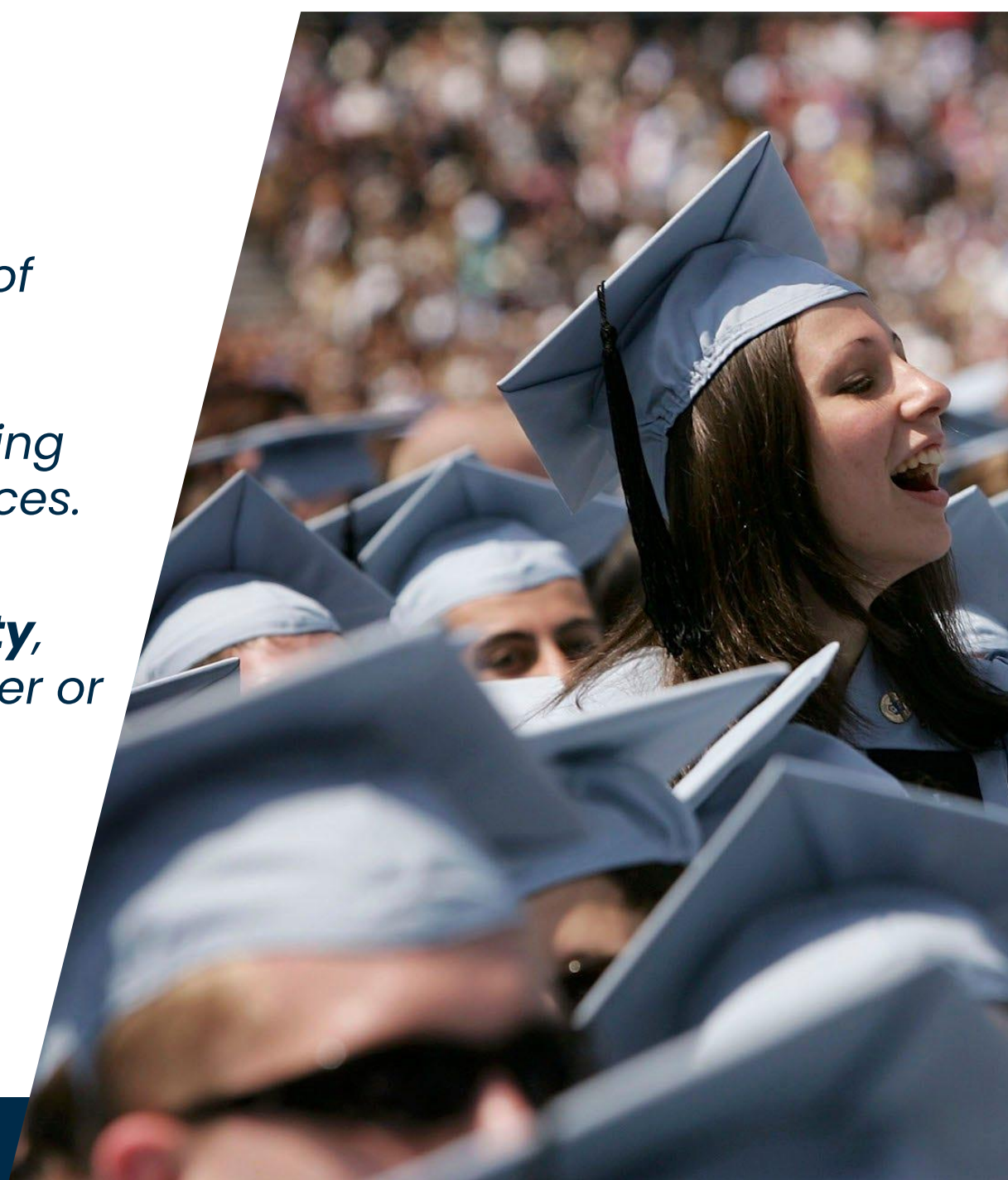
@PolitoSust

Food for thought

Nowadays, one of the fundamental tasks of universities is to provide an **integrated reflection on where science is going**, the various disciplines that comprise it, including of course the humanities and social sciences.

We need **to reflect on the reciprocal relationships between science and society**, how scientific progress influences, for better or for worse, our lives, and how **the needs of society affect the development of technologies and ultimately scientific research**.

Giorgio Parisi
Nobel prize 2021





**Politecnico
di Torino**

**Thanks for your
attention!**

patrizia.lombardi@polito.it

greenteamoffice@polito.it



www.campus-sostenibile.polito.it